

## Recombinant Rabbit CLU protein, His-tagged

Cat. No. CLU-5777R Lot. No. (See product label)

### SPECIFICATION

<b>Product Overview</b>	Recombinant Rabbit CLU aa. (Asn226~Glu447 (Accession # Q9XSC5)) fused with N-terminal His tag was produced in E. coli cells.
<b>Species</b>	Rabbit
<b>Source</b>	E.coli
<b>ProteinLength</b>	Asn226~Glu447
<b>Description</b>	This gene encodes a protein that is similar to the human clusterin protein, a secreted chaperone that can also be found in the cell cytosol under certain stress conditions. The human protein has been suggested to be involved in several basic biological events such as cell death, tumor progression, and neurodegenerative disorders.
<b>Form</b>	Freeze-dried powder
<b>Molecular Mass</b>	Predicted Molecular Mass: 27.1kDa
<b>Endotoxin</b>	<1.0EU per 1g (determined by the LAL method)
<b>Purity</b>	>95%
<b>Characteristic</b>	The isoelectric point is 5.6.
<b>Applications</b>	SDS-PAGE; WB; ELISA; IP.

 Tel: 1-631-559-9269 1-516-512-3133

 Email: [info@creative-biomart.com](mailto:info@creative-biomart.com)  Fax: 1-631-938-8127

 45-1 Ramsey Road, Shirley, NY 11967, USA

<b>Stability</b>	The thermal stability is described by the loss rate. The loss rate was determined by accelerated thermal degradation test, that is, incubate the protein at 37°C for 48h, and no obvious degradation and precipitation were observed. The loss rate is less than 5% within the expiration date under appropriate storage condition.
<b>Storage</b>	Avoid repeated freeze/thaw cycles. Store at 2-8°C for one month. Aliquot and store at -80°C for 12 months.
<b>Storage buffer</b>	Supplied as lyophilized form in PBS, pH7.4, containing 5% trehalose, 0.01% sarcosyl.
<b>Reconstitution</b>	Reconstitute in sterile PBS, pH7.2-pH7.4.

## GENE INFORMATION

<b>Gene Name</b>	CLU clusterin [ <i>Oryctolagus cuniculus</i> (rabbit) ]
<b>Official Symbol</b>	CLU
<b>Synonyms</b>	apo-J; apolipoprotein J; apolipoprotein J/clusterin; clusterin
<b>Gene ID</b>	100008713
<b>mRNA Refseq</b>	NM_001082049.2
<b>Protein Refseq</b>	NP_001075518.1
<b>UniProt ID</b>	Q9XSC5

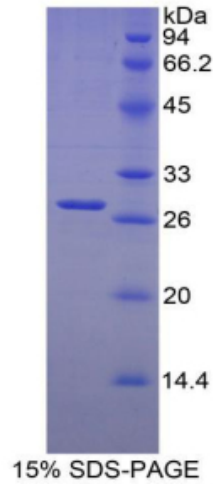
 Tel: 1-631-559-9269 1-516-512-3133

 Email: [info@creative-biomart.com](mailto:info@creative-biomart.com)  Fax: 1-631-938-8127

 45-1 Ramsey Road, Shirley, NY 11967, USA



SDS-PAGE



Tel: 1-631-559-9269 1-516-512-3133

Email: [info@creative-biomart.com](mailto:info@creative-biomart.com) Fax: 1-631-938-8127

45-1 Ramsey Road, Shirley, NY 11967, USA