

Recombinant Human CLVS1 Protein, Myc/DDK-tagged, C13 and N15-labeled

Cat. No. CLVS1-4796H **Lot. No.** (See product label)

SPECIFICATION

Product Overview	CLVS1 MS Standard C13 and N15-labeled recombinant protein (NP_775790) with a C-terminal MYC/DDK tag, was expressed in HEK293 cells.
Species	Human
Source	HEK293
Description	CLVS1 (Clavesin 1) is a Protein Coding gene. Diseases associated with CLVS1 include Duane Retraction Syndrome and Charge Syndrome. Among its related pathways are Clathrin derived vesicle budding and Ectoderm Differentiation. Gene Ontology (GO) annotations related to this gene include transporter activity and phosphatidylinositol-3,5-bisphosphate binding. An important paralog of this gene is CLVS2.
Molecular Mass	40.8 kDa
AA Sequence	MGPVSLLPKYQKLNTWNGDLAKMTHLQAGLSPETIEKARLELNENPDVLHQDIQQV RDMIITRPDIGFLRTDDAFILRFLRARKFHQADAFRLLAQYFQYRQLNLDMFKNFKAD DPGIKRALIDGFPGVLENRDHYGRKILLLFAANWDQSRNSFTDILRAILLSLEVLIEDPE LQINGFILIIDWSNFSFKQASKLTPSILKLAIEGLQDSFFARFGGVHFNQWPWYIHALYT LIKPFLKDKTRKRIFLHGNNLNSLHQLIHPEFLPSEFGGTLPPYDMGTWARTLLGPDY SDENDYTHTSYNAMHVKHTSSNLERECSPKLMKRSQSVVEAGTLKHEEKGENENT QPLLALDTRTRPLEQKLISEEDLAANDILDYKDDDDKV
Purity	> 80% as determined by SDS-PAGE and Coomassie blue staining

 Tel: 1-631-559-9269 1-516-512-3133

 Email: info@creative-biomart.com  Fax: 1-631-938-8127

 45-1 Ramsey Road, Shirley, NY 11967, USA

Stability	Stable for 3 months from receipt of products under proper storage and handling conditions.
Storage	Store at -80 centigrade. Avoid repeated freeze-thaw cycles.
Concentration	50 µg/mL as determined by BCA
Storage Buffer	100 mM glycine, 25 mM Tris-HCl, pH 7.3.

GENE INFORMATION

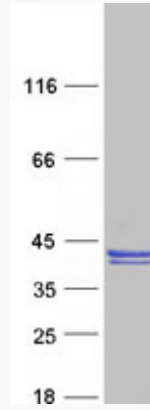
Gene Name	CLVS1 clavesin 1 [Homo sapiens (human)]
Official Symbol	CLVS1
Synonyms	CLVS1; clavesin 1; retinaldehyde binding protein 1 like 1, RLBP1L1; clavesin-1; C6orf212L; CRALBPL; MGC34646; retinaldehyde binding protein 1-like 1; retinaldehyde-binding protein 1-like 1; RLBP1L1; FLJ37248;
Gene ID	157807
mRNA Refseq	NM_173519
Protein Refseq	NP_775790
MIM	611292
UniProt ID	Q8IUQ0

 Tel: 1-631-559-9269 1-516-512-3133

 Email: info@creative-biomart.com  Fax: 1-631-938-8127

 45-1 Ramsey Road, Shirley, NY 11967, USA

SDS-PAGE



 Tel: 1-631-559-9269 1-516-512-3133

 Email: info@creative-biomart.com  Fax: 1-631-938-8127

 45-1 Ramsey Road, Shirley, NY 11967, USA