

Recombinant Dog CMA1 Protein (22-249 aa), His-tagged

Cat. No. CMA1-1364D Lot. No. (See product label)

SPECIFICATION

Product Overview	Recombinant Dog CMA1 Protein (22-249 aa) is produced by Yeast expression system. This protein is fused with a 6xHis tag at the N-terminal. Protein Description: Full Length of Mature Protein.
Species	Dog
Source	Yeast
ProteinLength	22-249 aa
Description	Major secreted protease of mast cells with suspected roles in vasoactive peptide generation, Extracellular domain matrix degradation, and regulation of gland secretion.
Form	Tris-based buffer,50% glycerol
Molecular Mass	27.5 kDa
AA Sequence	IIGGTESKPHSRPYMAHLEILTLRNHLASCGGFLIRRNFLVLTAAHCAGRFIMVTLGAH NIQKKEDTWQKLEVIKQFPHPKYDDLTLRHDIMLLKLKEKANLTLAVGTLPLSPQFNF VPPGRMCRVAGWGKRQVNGSGSDTLQEVLRLMDPQACRHYMAFDHNLQLCVG NPRKTKSAFKGDSGGPLL CAGVAQGIVSYGQNDAKPPAVFTRISHYRPWINKVLKQ NKA
Purity	> 90% as determined by SDS-PAGE.

 Tel: 1-631-559-9269 1-516-512-3133

 Email: info@creative-biomart.com  Fax: 1-631-938-8127

 45-1 Ramsey Road, Shirley, NY 11967, USA

Notes	Repeated freezing and thawing is not recommended. Store working aliquots at 4 centigrade for up to one week.
Storage	The shelf life is related to many factors, storage state, buffer ingredients, storage temperature and the stability of the protein itself. Generally, the shelf life of liquid form is 6 months at -20 centigrade/-80 centigrade. The shelf life of lyophilized form is 12 months at -20 centigrade/-80 centigrade.
Concentration	A hardcopy of COA with reconstitution instruction is sent along with the products. Please refer to it for detailed information.

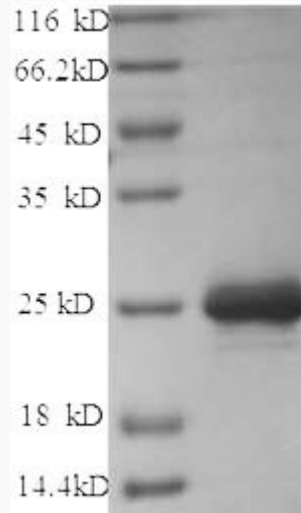
GENE INFORMATION

Gene Name	CMA1 chymase 1, mast cell [Homo sapiens]
Official Symbol	CMA1
Synonyms	CMA1; chymase; CYH; MCT1; MGC119890; MGC119891;
Gene ID	1215
mRNA Refseq	NM_001836
Protein Refseq	NP_001827
MIM	118938
UniProt ID	P21842

 Tel: 1-631-559-9269 1-516-512-3133

 Email: info@creative-biomart.com  Fax: 1-631-938-8127

 45-1 Ramsey Road, Shirley, NY 11967, USA



(Tris-Glycine gel) Discontinuous SDS-PAGE (reduced) with 5% enrichment gel and 15% separation gel.

 Tel: 1-631-559-9269 1-516-512-3133

 Email: info@creative-biomart.com  Fax: 1-631-938-8127

 45-1 Ramsey Road, Shirley, NY 11967, USA