

Recombinant Cynomolgus Monkey CMA1 Protein (22-247 aa), His-SUMO-tagged

Cat. No. CMA1-2111C **Lot. No.** (See product label)

SPECIFICATION

Product Overview	Recombinant Cynomolgus Monkey CMA1 Protein (22-247 aa) is produced by E. coli expression system. This protein is fused with a 6xHis-SUMO tag at the N-terminal. Protein Description: Full Length of Mature Protein.
Species	Cynomolgus
Source	E.coli
ProteinLength	22-247 aa
Description	Major secreted protease of mast cells with suspected roles in vasoactive peptide generation, Extracellular domain matrix degradation, and regulation of gland secretion.
Form	Tris-based buffer,50% glycerol
Molecular Mass	41.1 kDa
AA Sequence	IIGGTECKPHSRPYMAYLEIVTSNGPSKSCGGFLIRRNFVLTAVHCAGRSITVTLGAH NITEKEDTWQKLEVIKQFRHPKYNTSTLHHDIMLLKLKEKASLTAVGTLPPFSQFNF VPPGRMCRVAGWGRTGVLKPGSDTLQEVLRLMDPQACSHFRYFDHNLQLCVGN PRKTKSAFKGDSGGPLLCAGVAQGIVSYGRDLAKPPAVFTRISHYRPWINKILQAN
Purity	> 90% as determined by SDS-PAGE.

 Tel: 1-631-559-9269 1-516-512-3133

 Email: info@creative-biomart.com  Fax: 1-631-938-8127

 45-1 Ramsey Road, Shirley, NY 11967, USA

Notes	Repeated freezing and thawing is not recommended. Store working aliquots at 4 centigrade for up to one week.
Storage	The shelf life is related to many factors, storage state, buffer ingredients, storage temperature and the stability of the protein itself. Generally, the shelf life of liquid form is 6 months at -20 centigrade/-80 centigrade. The shelf life of lyophilized form is 12 months at -20 centigrade/-80 centigrade.
Concentration	A hardcopy of COA with reconstitution instruction is sent along with the products.

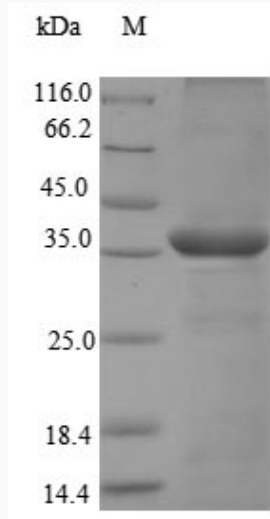
GENE INFORMATION

Gene Name	CMA1 chymase 1 [<i>Macaca fascicularis</i> (crab-eating macaque)]
Official Symbol	CMA1
Synonyms	CMA1; Chymase;
Gene ID	102128612
mRNA Refseq	NM_001285192
Protein Refseq	NP_001272121
UniProt ID	P56435

 Tel: 1-631-559-9269 1-516-512-3133

 Email: info@creative-biomart.com  Fax: 1-631-938-8127

 45-1 Ramsey Road, Shirley, NY 11967, USA



(Tris-Glycine gel) Discontinuous SDS-PAGE (reduced) with 5% enrichment gel and 15% separation gel.

 Tel: 1-631-559-9269 1-516-512-3133

 Email: info@creative-biomart.com  Fax: 1-631-938-8127

 45-1 Ramsey Road, Shirley, NY 11967, USA