

Recombinant Human CMBL Protein, GST-tagged

Cat. No. CMBL-1534H Lot. No. (See product label)

SPECIFICATION

Product Overview	Human CMBL full-length ORF (NP_620164.1, 1 a.a. - 245 a.a.) recombinant protein with GST-tag at N-terminal.
Species	Human
Source	Wheat Germ
Description	CMBL (EC 3.1.1.45) is a cysteine hydrolase of the dienelactone hydrolase family that is highly expressed in liver cytosol. CMBL preferentially cleaves cyclic esters, and it activates medoxomil-ester prodrugs in which the medoxomil moiety is linked to an oxygen atom (Ishizuka et al., 2010 [PubMed 20177059]).[supplied by OMIM, Apr 2010]
Molecular Mass	54.4 kDa
AA Sequence	MANEAYPCPCDIGHRLEYGGLGREVQVEHIKAYVTKSPVDAGKAVIVIQDIFGWQLP NTRYIADMISGNGYTTIVPDDFFVGQEPWDPSPGDWSIFPEWLKTRNAQKIDREISAILK YLKQQCHAQKIGIVGFCWGGTAVHHLMMKYSEFRAGVSVYGIVKDSEDIYNLKNPTL FIFAENDVVIPLKDVSLTQKLKEHCKVEYQIKTFSGQTHGFVHRKREDCSPADKPYI DEARRNLIEWLNKYM
Applications	Enzyme-linked Immunoabsorbent Assay Western Blot (Recombinant protein) Antibody Production Protein Array

 Tel: 1-631-559-9269 1-516-512-3133

 Email: info@creative-biomart.com  Fax: 1-631-938-8127

 45-1 Ramsey Road, Shirley, NY 11967, USA

Notes	Best use within three months from the date of receipt of this protein.
Storage	Store at -80 centigrade. Aliquot to avoid repeated freezing and thawing.
Storage Buffer	50 mM Tris-HCl, 10 mM reduced Glutathione, pH=8.0 in the elution buffer.

GENE INFORMATION

Gene Name	CMBL carboxymethylenebutenolidase homolog (Pseudomonas) [Homo sapiens]
Official Symbol	CMBL
Synonyms	CMBL; carboxymethylenebutenolidase homolog (Pseudomonas); carboxymethylenebutenolidase like (Pseudomonas); carboxymethylenebutenolidase homolog; FLJ23617; carboxymethylenebutenolidase-like (Pseudomonas); JS-1;
Gene ID	134147
mRNA Refseq	NM_138809
Protein Refseq	NP_620164
MIM	613379
UniProt ID	Q96DG6

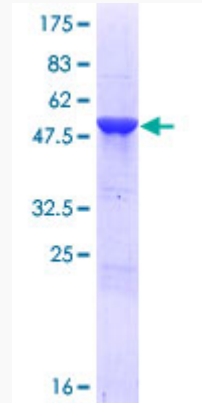
 Tel: 1-631-559-9269 1-516-512-3133

 Email: info@creative-biomart.com  Fax: 1-631-938-8127

 45-1 Ramsey Road, Shirley, NY 11967, USA

Quality Control

Testing:



12.5% SDS-PAGE Stained with Coomassie Blue.

 Tel: 1-631-559-9269 1-516-512-3133

 Email: info@creative-biomart.com  Fax: 1-631-938-8127

 45-1 Ramsey Road, Shirley, NY 11967, USA