

# Recombinant Human CMBL Protein, Myc/DDK-tagged, C13 and N15-labeled

**Cat. No.** CMBL-4919H    **Lot. No.** (See product label)

## SPECIFICATION

<b>Product Overview</b>	CMBL MS Standard C13 and N15-labeled recombinant protein (NP_620164) with a C-terminal MYC/DDK tag, was expressed in HEK293 cells.
<b>Species</b>	Human
<b>Source</b>	HEK293
<b>Description</b>	CMBL (EC 3.1.1.45) is a cysteine hydrolase of the diene lactone hydrolase family that is highly expressed in liver cytosol. CMBL preferentially cleaves cyclic esters, and it activates medoxomil-ester prodrugs in which the medoxomil moiety is linked to an oxygen atom.
<b>Molecular Mass</b>	28 kDa
<b>AA Sequence</b>	MANEAYPCPCDIGHRLEYGGLGREVQVEHIKAYVTKSPVDAGKAVIVIQDIFGWQLP NTRYIADMISGNGYTTIVPDDFFVQGEPWDPSGDWSIFPEWLKTRNAQKIDREISAILK YLKQQCHAQKIGIVGFCWGGTAVHHLMMKYSEFRAGVSVYGIVKDSEDIYNLKNPTL FIFAENDVVIPLKDVSLLTQKLKEHCKVEYQIKTFSGQTHGFVHRKREDCSPADKPYI DEARRNLIEWLNKYMTRTRPLEQKLISEEDLAANDILDYKDDDDKV
<b>Purity</b>	> 80% as determined by SDS-PAGE and Coomassie blue staining
<b>Stability</b>	Stable for 3 months from receipt of products under proper storage and handling conditions.

 Tel: 1-631-559-9269    1-516-512-3133

 Email: [info@creative-biomart.com](mailto:info@creative-biomart.com)     Fax: 1-631-938-8127

 45-1 Ramsey Road, Shirley, NY 11967, USA

<b>Storage</b>	Store at -80 centigrade. Avoid repeated freeze-thaw cycles.
<b>Concentration</b>	50 µg/mL as determined by BCA
<b>Storage Buffer</b>	100 mM glycine, 25 mM Tris-HCl, pH 7.3.

## GENE INFORMATION

<b>Gene Name</b>	CMBL carboxymethylenebutenolidase homolog [ Homo sapiens (human) ]
<b>Official Symbol</b>	CMBL
<b>Synonyms</b>	CMBL; carboxymethylenebutenolidase homolog (Pseudomonas); carboxymethylenebutenolidase like (Pseudomonas); carboxymethylenebutenolidase homolog; FLJ23617; carboxymethylenebutenolidase-like (Pseudomonas); JS-1;
<b>Gene ID</b>	134147
<b>mRNA Refseq</b>	NM_138809
<b>Protein Refseq</b>	NP_620164
<b>MIM</b>	613379
<b>UniProt ID</b>	Q96DG6

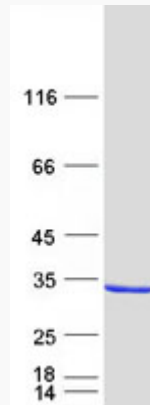
 Tel: 1-631-559-9269 1-516-512-3133

 Email: [info@creative-biomart.com](mailto:info@creative-biomart.com)  Fax: 1-631-938-8127

 45-1 Ramsey Road, Shirley, NY 11967, USA



SDS-PAGE



Tel: 1-631-559-9269 1-516-512-3133

Email: [info@creative-biomart.com](mailto:info@creative-biomart.com) Fax: 1-631-938-8127

45-1 Ramsey Road, Shirley, NY 11967, USA