

# Recombinant Human CMKLR1 Full Length Transmembrane protein, His-tagged

**Cat. No.** CMKLR1-1294H    **Lot. No.** (See product label)

## SPECIFICATION

### Product Overview

Recombinant Human CMKLR1 protein(Q99788)(1-373aa), fused with N-terminal His tag, was expressed in in vitro E. coli expression system.

### Species

Human

### Source

E.coli

### ProteinLength

1-373aa

### Form

If the delivery form is liquid, the default storage buffer is Tris/PBS-based buffer, 5%-50% glycerol.

If the delivery form is lyophilized powder, the buffer before lyophilization is Tris/PBS-based buffer, 6% Trehalose, pH 8.0.

### Molecular Mass

45.1 kDa

### AA Sequence

MRMEDEDYNTSISYGDEYPDYLDSIVVLEDLSPLEARVTRIFLVVVYSIVCFLGILGNG  
LVIIATFKMKKTVMVMWFLNLAVADFLFNVFLPIHITYAAMDYHWVFGTAMCKISNFL  
LIHNMFTSVFLLTISSDRCSVLLPVWSQNHRSVRLAYMACMVIWVLAFFLSSPSLVF  
RDTANLHGKISCFNNFSLSTPGSSSWPTHSQMDPVGYSRHMVVTVTRFLCGFLVPV  
LIITACYLTIVCKLQRNRLAKTKKPKFIIVTIIITFFLCWCPYHTLNLELHHTAMPGSVFS  
LGLPLATALAIANSCMNPILYVFMGQDFKKFKVALFSRLVNALSEDTGHSSYPShRSF  
TKMSSMNERTSMNERETGML

 Tel: 1-631-559-9269    1-516-512-3133

 Email: [info@creative-biomart.com](mailto:info@creative-biomart.com)     Fax: 1-631-938-8127

 45-1 Ramsey Road, Shirley, NY 11967, USA

<b>Purity</b>	Greater than 85% as determined by SDS-PAGE.
<b>Storage</b>	Store at -20°C/-80°C upon receipt, aliquoting is necessary for mutiple use. Avoid repeated freeze-thaw cycles.
<b>Reconstitution</b>	Please reconstitute protein in deionized sterile water to a concentration of 0.1-1.0 mg/mL. We recommend to add 5-50% of glycerol (final concentration) and aliquot for long-term storage at -20°C/-80°C.

## GENE INFORMATION

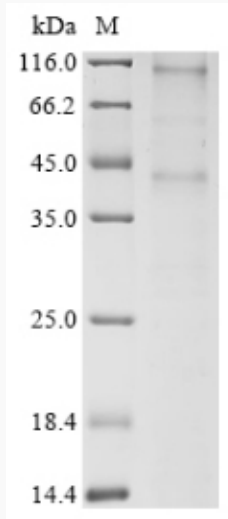
<b>Gene Name</b>	CMKLR1 chemokine-like receptor 1 [ Homo sapiens ]
<b>Official Symbol</b>	CMKLR1
<b>Synonyms</b>	CMKLR1; chemokine-like receptor 1; chemokine receptor-like 1; G-protein coupled receptor DEZ; G-protein coupled receptor ChemR23; orphan G-protein coupled receptor, Dez; DEZ; ChemR23; CHEMERINR; MGC126105; MGC126106;
<b>Gene ID</b>	1240
<b>mRNA Refseq</b>	NM_001142343
<b>Protein Refseq</b>	NP_001135815
<b>MIM</b>	602351
<b>UniProt ID</b>	Q99788

 Tel: 1-631-559-9269 1-516-512-3133

 Email: [info@creative-biomart.com](mailto:info@creative-biomart.com)  Fax: 1-631-938-8127

 45-1 Ramsey Road, Shirley, NY 11967, USA

**SDS-PAGE**



 Tel: 1-631-559-9269 1-516-512-3133

 Email: [info@creative-biomart.com](mailto:info@creative-biomart.com)  Fax: 1-631-938-8127

 45-1 Ramsey Road, Shirley, NY 11967, USA