

Recombinant Human CMKLR1 Protein, GST-tagged

Cat. No. CMKLR1-1539H **Lot. No.** (See product label)

SPECIFICATION

Product Overview	Human CMKLR1 full-length ORF (NP_004063.1, 1 a.a. - 371 a.a.) recombinant protein with GST-tag at N-terminal.
Species	Human
Source	Wheat Germ
Description	CMKLR1 (Chemerin Chemokine-Like Receptor 1) is a Protein Coding gene. Diseases associated with CMKLR1 include Cataract 18, Autosomal Recessive and Alzheimer's Disease 13. Among its related pathways are Peptide ligand-binding receptors. GO annotations related to this gene include G-protein coupled receptor activity and chemokine receptor activity. An important paralog of this gene is C3AR1.
Molecular Mass	68.4 kDa
AA Sequence	MEDEDYNTSISYGDEYPDYLDSIVVLEDLSPLEARVTRIFLVVVYSIVCFLGILGNGLVI IIATFKMKKTVNMVWFLNLAVADFLFNVFLPIHITYAAMDYHWWVFGTAMCKISNFLLIH NMFTSVLLTISSDRCSVLLPVWSQNHRSVRLAYMACMVIWVLAFFLSSPSLVFRD TANLHGKISCFNNSLSTPGSSSWPTHSQMDPVGYSRHMVVTVTRFLCGFLVPVLII TACYLTIVCKLQRNRLAKTKKPKIIVTIIITFFLCWCPYHTLNLLELHHTAMPGSVFSL GLPLATALAIANSCMNPILYVFMGQDFKFKVALFSRLVNALSEDTGHSSYP SHRSFT KMSSMNERTSMNERETGML
Applications	Enzyme-linked Immunoabsorbent Assay Western Blot (Recombinant protein)

 Tel: 1-631-559-9269 1-516-512-3133

 Email: info@creative-biomart.com  Fax: 1-631-938-8127

 45-1 Ramsey Road, Shirley, NY 11967, USA

	Antibody Production Protein Array
Notes	Best use within three months from the date of receipt of this protein.
Storage	Store at -80 centigrade. Aliquot to avoid repeated freezing and thawing.
Storage Buffer	50 mM Tris-HCl, 10 mM reduced Glutathione, pH=8.0 in the elution buffer.
GENE INFORMATION	
Gene Name	CMKLR1 chemokine-like receptor 1 [Homo sapiens]
Official Symbol	CMKLR1
Synonyms	CMKLR1; chemokine-like receptor 1; chemokine receptor-like 1; G-protein coupled receptor DEZ; G-protein coupled receptor ChemR23; orphan G-protein coupled receptor, Dez; DEZ; ChemR23; CHEMERINR; MGC126105; MGC126106;
Gene ID	1240
mRNA Refseq	NM_001142343
Protein Refseq	NP_001135815
MIM	602351
UniProt ID	Q99788

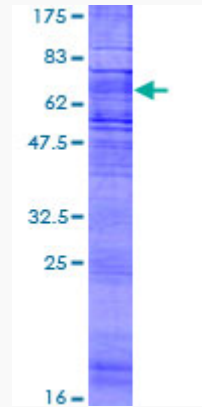
 Tel: 1-631-559-9269 1-516-512-3133

 Email: info@creative-biomart.com  Fax: 1-631-938-8127

 45-1 Ramsey Road, Shirley, NY 11967, USA

Quality Control

Testing:



12.5% SDS-PAGE Stained with Coomassie Blue.

 Tel: 1-631-559-9269 1-516-512-3133

 Email: info@creative-biomart.com  Fax: 1-631-938-8127

 45-1 Ramsey Road, Shirley, NY 11967, USA