

Recombinant Human CMKLR1 protein, His-GST&Myc-tagged

Cat. No. CMKLR1-4633H Lot. No. (See product label)

SPECIFICATION

Product Overview	Recombinant Human CMKLR1 protein(Q99788)(321-373aa), fused with N-terminal His and GST tag and C-terminal Myc tag, was expressed in E.coli.
Species	Human
Source	E.coli
ProteinLength	321-373aa
Form	If the delivery form is liquid, the default storage buffer is Tris/PBS-based buffer, 5%-50% glycerol. If the delivery form is lyophilized powder, the buffer before lyophilization is Tris/PBS-based buffer, 6% Trehalose, pH 8.0.
Molecular Mass	41.3 kDa
Purity	Greater than 85% as determined by SDS-PAGE.
Storage	Store at -20°C/-80°C upon receipt, aliquoting is necessary for mutiple use. Avoid repeated freeze-thaw cycles.
Reconstitution	We recommend that this vial be briefly centrifuged prior to opening to bring the contents to the bottom. Please reconstitute protein in deionized sterile water to a concentration of 0.1-1.0 mg/mL. We recommend to add 5-50% of glycerol (final concentration) and aliquot for long-term storage at -20°C/-80°C.

 Tel: 1-631-559-9269 1-516-512-3133

 Email: info@creative-biomart.com  Fax: 1-631-938-8127

 45-1 Ramsey Road, Shirley, NY 11967, USA

AA Sequence QDFKKFKVALFSRLVNALSEDTGHSSYP SHRSFTKMSSMNERTSMNERETGML

GENE INFORMATION

Gene Name [CMKLR1 chemokine-like receptor 1 \[Homo sapiens \]](#)

Official Symbol [CMKLR1](#)

Synonyms CMKLR1; chemokine-like receptor 1; chemokine receptor-like 1; G-protein coupled receptor DEZ; G-protein coupled receptor ChemR23; orphan G-protein coupled receptor, Dez; DEZ; ChemR23; CHEMERINR; MGC126105; MGC126106;

Gene ID [1240](#)

mRNA Refseq [NM_001142343](#)

Protein Refseq [NP_001135815](#)

MIM [602351](#)

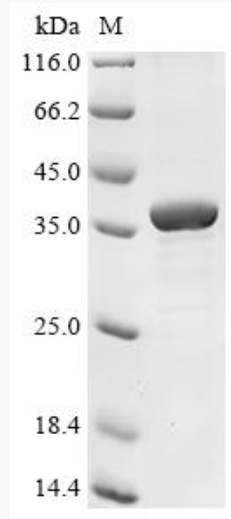
UniProt ID [Q99788](#)

 Tel: 1-631-559-9269 1-516-512-3133

 Email: info@creative-biomart.com  Fax: 1-631-938-8127

 45-1 Ramsey Road, Shirley, NY 11967, USA

SDS-PAGE



 Tel: 1-631-559-9269 1-516-512-3133

 Email: info@creative-biomart.com  Fax: 1-631-938-8127

 45-1 Ramsey Road, Shirley, NY 11967, USA