

Recombinant Human CMPK1 Protein, GST-tagged

Cat. No. CMPK1-1541H Lot. No. (See product label)

SPECIFICATION

Product Overview	Human CMPK partial ORF (NP_057392, 72 a.a. - 181 a.a.) recombinant protein with GST-tag at N-terminal.
Species	Human
Source	Wheat Germ
Description	This gene encodes one of the enzymes required for cellular nucleic acid biosynthesis. This enzyme catalyzes the transfer of a phosphate group from ATP to CMP, UMP, or dCMP, to form the corresponding diphosphate nucleotide. Alternate splicing results in both coding and non-coding transcript variants. [provided by RefSeq, Feb 2012]
Molecular Mass	37.84 kDa
AA Sequence	DERKNPDSQYGELIEKYIKEGKIVPVEITISLLKREMDQTMAANAQKNKFLIDGFPRN QDNLQGWNKTMDGKADVSVLFFDCNNEICIERCLERKSSGRSDDNRESLE
Applications	Enzyme-linked Immunoabsorbent Assay Western Blot (Recombinant protein) Antibody Production Protein Array
Notes	Best use within three months from the date of receipt of this protein.
Storage	Store at -80 centigrade. Aliquot to avoid repeated freezing and thawing.

 Tel: 1-631-559-9269 1-516-512-3133

 Email: info@creative-biomart.com  Fax: 1-631-938-8127

 45-1 Ramsey Road, Shirley, NY 11967, USA

Storage Buffer 50 mM Tris-HCl, 10 mM reduced Glutathione, pH=8.0 in the elution buffer.

GENE INFORMATION

Gene Name [CMPK1 cytidine monophosphate \(UMP-CMP\) kinase 1, cytosolic \[Homo sapiens \]](#)

Official Symbol [CMPK1](#)

Synonyms CMPK1; cytidine monophosphate (UMP-CMP) kinase 1, cytosolic; CMPK, cytidylate kinase; UMP-CMP kinase; Cytidine monophosphate kinase; UMP CMP kinase; UMP CMPK; UMP/CMP kinase; cytidylate kinase; deoxycytidylate kinase; uridine monophosphate kinase; uridine monophosphate/cytidine monophosphate kinase; CMK; UMK; CMPK; UMPK; UMP-CMPK; RP11-511I2.1;

Gene ID [51727](#)

mRNA Refseq [NM_001136140](#)

Protein Refseq [NP_001129612](#)

MIM [191710](#)

UniProt ID [P30085](#)

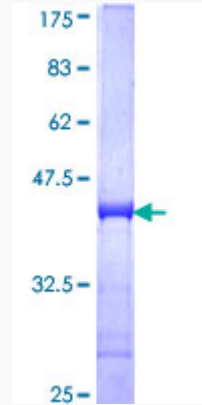
 Tel: 1-631-559-9269 1-516-512-3133

 Email: info@creative-biomart.com  Fax: 1-631-938-8127

 45-1 Ramsey Road, Shirley, NY 11967, USA

Quality Control

Testing:



12.5% SDS-PAGE Stained with Coomassie Blue.

 Tel: 1-631-559-9269 1-516-512-3133

 Email: info@creative-biomart.com  Fax: 1-631-938-8127

 45-1 Ramsey Road, Shirley, NY 11967, USA