

Recombinant Mouse LOXL4 Protein (1-196 aa), His-tagged

Cat. No. CMPK1-2002M Lot. No. (See product label)

SPECIFICATION

Product Overview	Recombinant Mouse LOXL4 Protein (1-196 aa) is produced by E. coli expression system. This protein is fused with a 6xHis tag at the N-terminal. Research Area: Epigenetics and Nuclear Signalingn. Protein Description: Full Length.
Species	Mouse
Source	E.coli
ProteinLength	1-196 aa
Description	Catalyzes the phosphorylation of pyrimidine nucleoside monophosphates at the expense of ATP. Plays an important role in de novo pyrimidine nucleotide biosynthesis. Has preference for UMP and CMP as phosphate acceptors. Also displays broad nucleoside diphosphate kinase activity.
Form	Tris-based buffer,50% glycerol
Molecular Mass	26.2 kDa
AA Sequence	MKPLVVFVLGGPGAGKGTQCARIVEKYGYTHLSAGELLRDERKNPDSQYGELIEKYI KEGKIVPVEITISLLKREMDQTMAANAQKNKFLIDGFPRNQDNLQGWNKTMDGKAD VSFVLFFDCNNEICIERCLER GKSSGRSDDNRESLEKRIQTYLESTKPIIDL YEEMGKV KKIDASKSVDEVFGEVVKIFDKEG
Purity	> 90% as determined by SDS-PAGE.

 Tel: 1-631-559-9269 1-516-512-3133

 Email: info@creative-biomart.com  Fax: 1-631-938-8127

 45-1 Ramsey Road, Shirley, NY 11967, USA

Notes	Repeated freezing and thawing is not recommended. Store working aliquots at 4 centigrade for up to one week.
Storage	The shelf life is related to many factors, storage state, buffer ingredients, storage temperature and the stability of the protein itself. Generally, the shelf life of liquid form is 6 months at -20 centigrade/-80 centigrade. The shelf life of lyophilized form is 12 months at -20 centigrade/-80 centigrade.
Concentration	A hardcopy of COA with reconstitution instruction is sent along with the products.

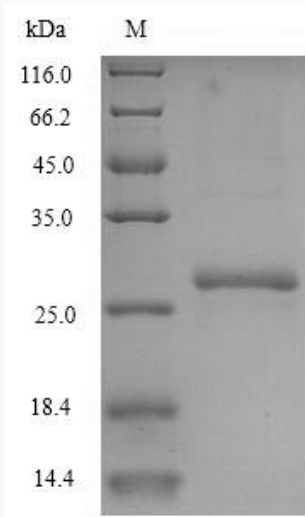
GENE INFORMATION

Gene Name	Cmpk1 cytidine monophosphate (UMP-CMP) kinase 1 [Mus musculus (house mouse)]
Official Symbol	CMPK1
Synonyms	Cmpk1; CK; Cmpk; UMP-CMPk; 0610011D08Rik;
Gene ID	https://www.ncbi.nlm.nih.gov/gene/66588
mRNA Refseq	NM_025647
Protein Refseq	NP_079923
UniProt ID	Q9DBP5

 Tel: 1-631-559-9269 1-516-512-3133

 Email: info@creative-biomart.com  Fax: 1-631-938-8127

 45-1 Ramsey Road, Shirley, NY 11967, USA



(Tris-Glycine gel) Discontinuous SDS-PAGE (reduced) with 5% enrichment gel and 15% separation gel.

 Tel: 1-631-559-9269 1-516-512-3133

 Email: info@creative-biomart.com  Fax: 1-631-938-8127

 45-1 Ramsey Road, Shirley, NY 11967, USA