

Recombinant Human CMSS1 Protein, Myc/DDK-tagged, C13 and N15-labeled

Cat. No. CMSS1-4892H Lot. No. (See product label)

SPECIFICATION

Product Overview	C3orf26 MS Standard C13 and N15-labeled recombinant protein (NP_115735) with a C-terminal MYC/DDK tag, was expressed in HEK293 cells.
Species	Human
Source	HEK293
Description	CMSS1 (Cms1 Ribosomal Small Subunit Homolog) is a Protein Coding gene. Diseases associated with CMSS1 include Refractive Error and Degenerative Myopia. Gene Ontology (GO) annotations related to this gene include nucleic acid binding.
Molecular Mass	31.8 kDa
AA Sequence	MADDLGDEWWENQPTGAGSSPEASDGE GEGDTEVMQQETVPVPVPSEKTKQPKE CFLIQPKERKENTTKTRKRRKKKITDVLAKSEPKPLPEDLQKLMKDYSSRRLVIEL EELNLPDSCFLKANDLTHSLSSYLKGCIPKWWKLRKNHSEKKSVMMLIICSSAVRALE LIRSMTAFRGDGKVIKLF AKHIKVQAQVKLLEKRVVHLGVGTPGRIKELVKQGGLNLS PLKFLVFDWNWRDQKLRMMMDIPEIRKEVFELLEMGVLSLCKSESLKLGFLTRTRPL EQKLISEEDLAANDILDYKDDDDKV
Purity	> 80% as determined by SDS-PAGE and Coomassie blue staining
Stability	Stable for 3 months from receipt of products under proper storage and handling conditions.

 Tel: 1-631-559-9269 1-516-512-3133

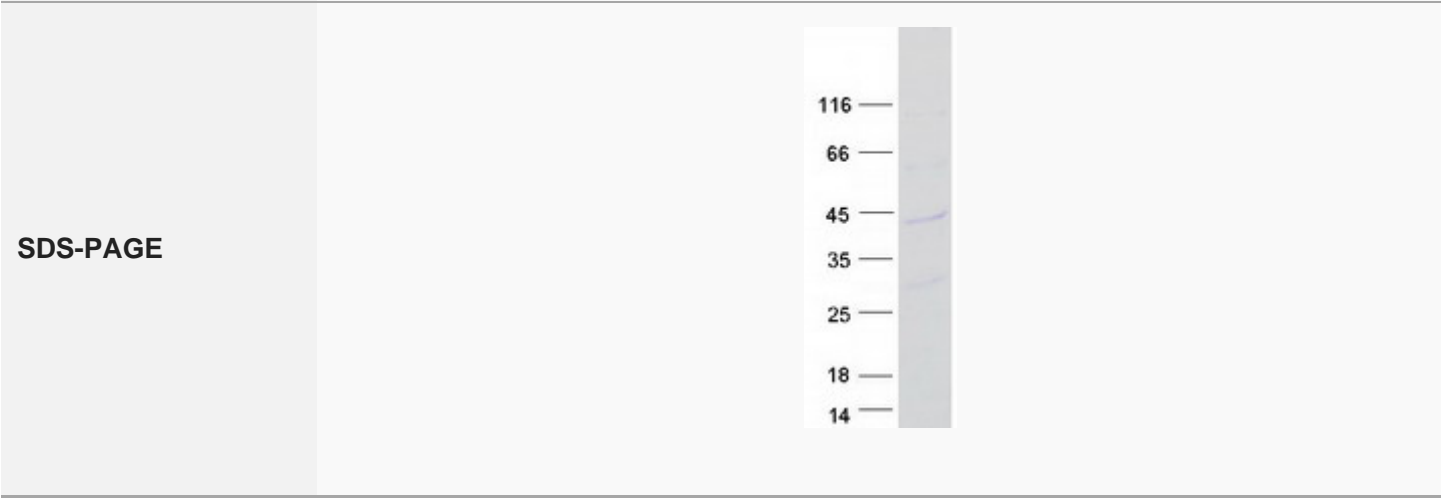
 Email: info@creative-biomart.com  Fax: 1-631-938-8127

 45-1 Ramsey Road, Shirley, NY 11967, USA

Storage	Store at -80 centigrade. Avoid repeated freeze-thaw cycles.
Concentration	50 µg/mL as determined by BCA
Storage Buffer	100 mM glycine, 25 mM Tris-HCl, pH 7.3.

GENE INFORMATION

Gene Name	CMSS1 cms1 ribosomal small subunit homolog [Homo sapiens (human)]
Official Symbol	CMSS1
Synonyms	CMSS1; cms1 ribosomal small subunit homolog; C3orf26; protein CMSS1
Gene ID	84319
mRNA Refseq	NM_032359
Protein Refseq	NP_115735
UniProt ID	Q9BQ75



Tel: 1-631-559-9269 1-516-512-3133

Email: info@creative-biomart.com Fax: 1-631-938-8127

45-1 Ramsey Road, Shirley, NY 11967, USA