

## Recombinant Human CMTM6 Protein, Myc/DDK-tagged

Cat. No. CMTM6-01H    Lot. No. (See product label)

### SPECIFICATION

<b>Product Overview</b>	Recombinant protein of human CKLF-like MARVEL transmembrane domain containing 6 (CMTM6) with a C-Myc/DDK tag was expressed in HEK293T.
<b>Species</b>	Human
<b>Source</b>	HEK293
<b>Description</b>	This gene belongs to the chemokine-like factor gene superfamily, a novel family that is similar to the chemokine and transmembrane 4 superfamilies. This gene is one of several chemokine-like factor genes located in a cluster on chromosome 3. This gene is widely expressed in many tissues, but the exact function of the encoded protein is unknown.
<b>Molecular Mass</b>	20.2 kDa
<b>Purity</b>	> 80% as determined by SDS-PAGE and Coomassie blue staining
<b>Stability</b>	Stable for 12 months from the date of receipt of the product under proper storage and handling conditions. Avoid repeated freeze-thaw cycles.
<b>Storage</b>	Store at -80 centigrade.
<b>Concentration</b>	>50 µg/mL as determined by microplate BCA method
<b>Storage Buffer</b>	25 mM Tris.HCl, pH 7.3, 100 mM glycine, 10% glycerol

 Tel: 1-631-559-9269    1-516-512-3133

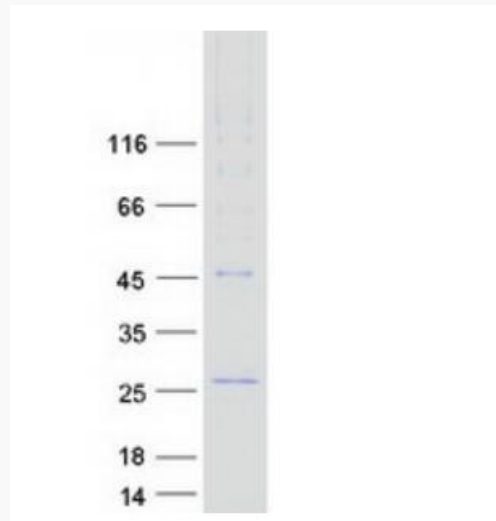
 Email: [info@creative-biomart.com](mailto:info@creative-biomart.com)     Fax: 1-631-938-8127

 45-1 Ramsey Road, Shirley, NY 11967, USA

**GENE INFORMATION**

<b>Gene Name</b>	CMTM6 CKLF like MARVEL transmembrane domain containing 6 [ Homo sapiens (human) ]
<b>Official Symbol</b>	CMTM6
<b>Synonyms</b>	CMTM6; CKLF like MARVEL transmembrane domain containing 6; CKLFSF6; PRO2219; CKLF-like MARVEL transmembrane domain-containing protein 6; chemokine-like factor super family 6; chemokine-like factor superfamily 6; chemokine-like factor superfamily member 6
<b>Gene ID</b>	54918
<b>mRNA Refseq</b>	NM_017801
<b>Protein Refseq</b>	NP_060271
<b>MIM</b>	607889
<b>UniProt ID</b>	Q9NX76

 Tel: 1-631-559-9269 1-516-512-3133 Email: [info@creative-biomart.com](mailto:info@creative-biomart.com)  Fax: 1-631-938-8127 45-1 Ramsey Road, Shirley, NY 11967, USA

**SDS-PAGE**

Coomassie blue staining of purified CMTM6 protein (Cat# TP301061). The protein was produced from HEK293T cells transfected with CMTM6 cDNA clone (Cat# RC201061) using MegaTran 2.0 (Cat# TT210002).

 Tel: 1-631-559-9269 1-516-512-3133

 Email: [info@creative-biomart.com](mailto:info@creative-biomart.com)  Fax: 1-631-938-8127

 45-1 Ramsey Road, Shirley, NY 11967, USA