

Recombinant Full Length Human CMTM6 Protein, C-Flag-tagged

Cat. No. CMTM6-1363HFL **Lot. No.** (See product label)

SPECIFICATION

Product Overview	Recombinant Full Length Human CMTM6 Protein, fused to Flag-tag at C-terminus, was expressed in Mammalian cells.
Species	Human
Source	Mammalian Cells
Description	This gene belongs to the chemokine-like factor gene superfamily, a novel family that is similar to the chemokine and transmembrane 4 superfamilies. This gene is one of several chemokine-like factor genes located in a cluster on chromosome 3. This gene is widely expressed in many tissues, but the exact function of the encoded protein is unknown.
Form	25 mM Tris HCl, pH 7.3, 100 mM glycine, 10% glycerol.
Molecular Mass	20.2 kDa
AA Sequence	MENGAVYSPTTEEDPGPARGPRSGLAAYFFMGRLPLLRRVLKGLQLLLSLLAFICEE VVSQCTLGGGLYF FEFVSCSAFLLSLLILIVYCTPFYERVDTTKVKSSDFYITLGTGCV FLLASIIFVSTHDR TSAEIAAIVF GFIASFMFLLDFITMLYEKRQESQLRKPENTTRAEALTEPLNATRTRPLEQKLISEEDL AANDILDYKDDDDKV
Purity	> 80% as determined by SDS-PAGE and Coomassie blue staining.

 Tel: 1-631-559-9269 1-516-512-3133

 Email: info@creative-biomart.com  Fax: 1-631-938-8127

 45-1 Ramsey Road, Shirley, NY 11967, USA

Stability	Stable for 12 months from the date of receipt of the product under proper storage and handling conditions. Avoid repeated freeze-thaw cycles.
Storage	Store at -80 centigrade.
Concentration	>50 ug/mL as determined by microplate BCA method.
Preparation	Recombinant protein was captured through anti-DDK affinity column followed by conventional chromatography steps.
Protein Families	Transmembrane
Full Length	Full L.

GENE INFORMATION

Gene Name	CMTM6 CKLF like MARVEL transmembrane domain containing 6 [Homo sapiens (human)]
Official Symbol	CMTM6
Synonyms	CKLFSF6; PRO2219
Gene ID	54918
mRNA Refseq	NM_017801.3
Protein Refseq	NP_060271.1
MIM	607889

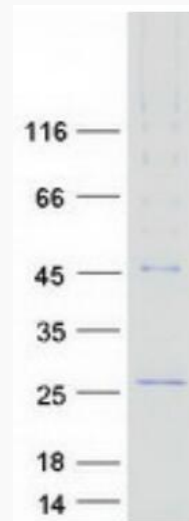
 Tel: 1-631-559-9269 1-516-512-3133

 Email: info@creative-biomart.com  Fax: 1-631-938-8127

 45-1 Ramsey Road, Shirley, NY 11967, USA

UniProt ID

Q9NX76



Coomassie blue staining of purified CMTM6 protein.

 Tel: 1-631-559-9269 1-516-512-3133

 Email: info@creative-biomart.com  Fax: 1-631-938-8127

 45-1 Ramsey Road, Shirley, NY 11967, USA