

Recombinant Human CMTM6 Protein, GST-tagged

Cat. No. CMTM6-1545H **Lot. No.** (See product label)

SPECIFICATION

Product Overview	Human CMTM6 full-length ORF (NP_060271.1, 1 a.a. - 183 a.a.) recombinant protein with GST tag at N-terminal.
Species	Human
Source	Wheat Germ
Description	This gene belongs to the chemokine-like factor gene superfamily, a novel family that is similar to the chemokine and transmembrane 4 superfamilies. This gene is one of several chemokine-like factor genes located in a cluster on chromosome 3. This gene is widely expressed in many tissues, but the exact function of the encoded protein is unknown. [provided by RefSeq, Jul 2008]
Molecular Mass	46.8 kDa
AA Sequence	MENGAVYSPTTEEDPGPARGPRSGLAAYFFMGRLPLLRVVKGLQLLSLLAFICEE VVSQCTLGGLYFFFEVSCSAFLLSLLILIVYCTPFYERVDTTKVKSSDFYITLGTGCV FLLASIIFVSTHDRTSAEIAAIVFGFIASFMLLDFITMLYEKRQESQLRKPENTTRAEAL TEPLNA
Applications	Enzyme-linked Immunoabsorbent Assay Western Blot (Recombinant protein) Antibody Production Protein Array

 Tel: 1-631-559-9269 1-516-512-3133

 Email: info@creative-biomart.com  Fax: 1-631-938-8127

 45-1 Ramsey Road, Shirley, NY 11967, USA

Notes	Best use within three months from the date of receipt of this protein.
Storage	Store at -80 centigrade. Aliquot to avoid repeated freezing and thawing.
Storage Buffer	50 mM Tris-HCl, 10 mM reduced Glutathione, pH=8.0 in the elution buffer.
GENE INFORMATION	
Gene Name	CMTM6 CKLF-like MARVEL transmembrane domain containing 6 [Homo sapiens]
Official Symbol	CMTM6
Synonyms	CMTM6; CKLF-like MARVEL transmembrane domain containing 6; chemokine like factor super family 6 , chemokine like factor superfamily 6 , CKLFSF6; CKLF-like MARVEL transmembrane domain-containing protein 6; FLJ20396; chemokine-like factor superfamily 6; chemokine-like factor super family 6; chemokine-like factor superfamily member 6; CKLFSF6; PRO2219;
Gene ID	54918
mRNA Refseq	NM_017801
Protein Refseq	NP_060271
MIM	607889
UniProt ID	Q9NX76

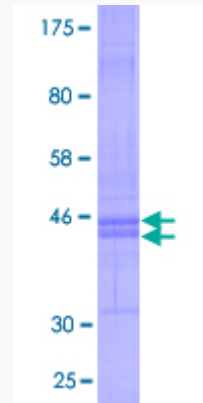
 Tel: 1-631-559-9269 1-516-512-3133

 Email: info@creative-biomart.com  Fax: 1-631-938-8127

 45-1 Ramsey Road, Shirley, NY 11967, USA

Quality Control

Testing:



12.5% SDS-PAGE Stained with Coomassie Blue

 Tel: 1-631-559-9269 1-516-512-3133

 Email: info@creative-biomart.com  Fax: 1-631-938-8127

 45-1 Ramsey Road, Shirley, NY 11967, USA