

Active Recombinant Human CMTM6 Full Length Transmembrane protein(Nanodisc)

Cat. No. CMTM6-475H Lot. No. (See product label)

SPECIFICATION

Product Overview

Recombinant Human CMTM6 Full Length Transmembrane protein(Q9NX76), was expressed in HEK293.

Species

Human

Source

HEK293

Form

Lyophilized from nanodisc solubilization buffer (20 mM Tris-HCl, 150 mM NaCl, pH 8.0). Normally 5% – 8% trehalose is added as protectants before lyophilization. Please see Certificate of Analysis for specific instructions.

Bio-activity

Elisa plates were pre-coated with Flag Tag CMTM6-Nanodisc (0.2µg/per well). Serial diluted anti-Flag monoclonal antibody solutions were added, washed, and incubated with secondary antibody before Elisa reading. From above data, the EC50 for anti-Flag monoclonal antibody binding with CMTM6-Nanodisc is 4.393ng/ml.

Molecular Mass

The human full length CMTM6 protein has a MW of 20.4 kDa.

Storage

Store at -20°C to -80°C for 12 months in lyophilized form. After reconstitution, if not intended for use within a month, aliquot and store at -80°C (Avoid repeated freezing and thawing). Lyophilized proteins are shipped at ambient temperature.

Reconstitution

It is recommended that sterile water be added to the vial to prepare a stock solution of 0.2 ug/ul. Centrifuge the vial at 4°C before opening to recover the entire contents.

 Tel: 1-631-559-9269 1-516-512-3133

 Email: info@creative-biomart.com  Fax: 1-631-938-8127

 45-1 Ramsey Road, Shirley, NY 11967, USA

Full Length Full L.

GENE INFORMATION

Gene Name CMTM6 CKLF-like MARVEL transmembrane domain containing 6 [Homo sapiens]

Official Symbol CMTM6

Synonyms CMTM6; CKLF-like MARVEL transmembrane domain containing 6; chemokine like factor super family 6 , chemokine like factor superfamily 6 , CKLFSF6; CKLF-like MARVEL transmembrane domain-containing protein 6; FLJ20396; chemokine-like factor superfamily 6; chemokine-like factor super family 6; chemokine-like factor superfamily member 6; CKLFSF6; PRO2219;

Gene ID 54918

mRNA Refseq NM_017801

Protein Refseq NP_060271

MIM 607889

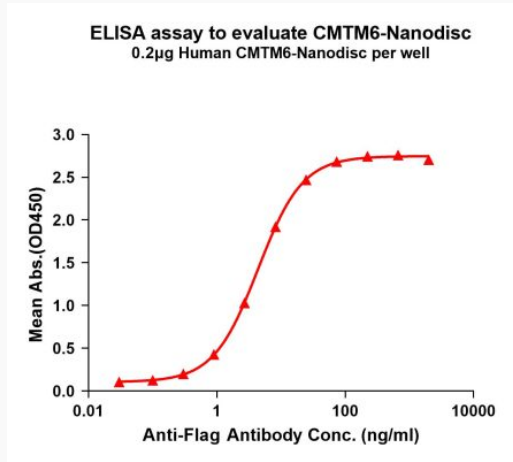
UniProt ID Q9NX76

 Tel: 1-631-559-9269 1-516-512-3133

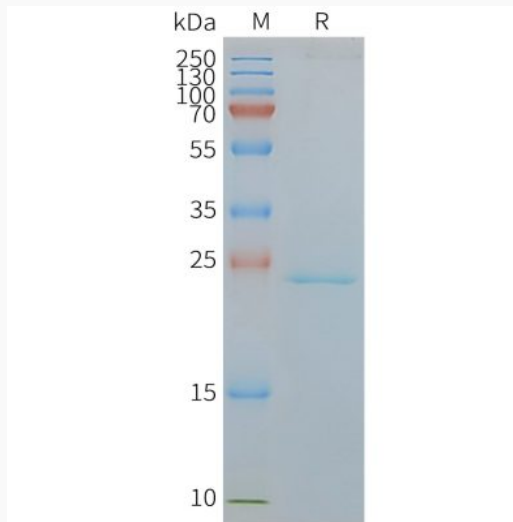
 Email: info@creative-biomart.com  Fax: 1-631-938-8127

 45-1 Ramsey Road, Shirley, NY 11967, USA

Activity



SDS-PAGE



 Tel: 1-631-559-9269 1-516-512-3133

 Email: info@creative-biomart.com  Fax: 1-631-938-8127

 45-1 Ramsey Road, Shirley, NY 11967, USA