

Recombinant Human CMTM7 Protein, GST-tagged

Cat. No. CMTM7-1396H **Lot. No.** (See product label)

SPECIFICATION

Product Overview	Human CKLFSF7 full-length ORF (AAH10116, 1 a.a. - 175 a.a.) recombinant protein with GST-tag at N-terminal.
Species	Human
Source	Wheat Germ
Description	This gene belongs to the chemokine-like factor gene superfamily, a novel family that is similar to the chemokine and transmembrane 4 superfamilies. This gene is one of several chemokine-like factor genes located in a cluster on chromosome 3. This gene acts as a tumor suppressor that regulates G1/S transition in the cell cycle, and epidermal growth factor receptor/protein kinase B signaling during tumor pathogenesis. Alternative splicing results in multiple transcript variants encoding different isoforms. [provided by RefSeq, Feb 2016]
Molecular Mass	44.99 kDa
AA Sequence	MSHGAGLVRTTCSSGSALGPGAGAAQPSASPLEGLLDLSYPRTHAALLKVAQMVTLLIAFICVRSSLWTNYSAYSIFYEVVTICDLIMILAFYLVHLFRFYRVLTCSIWPLSELLHYLIGTLLLLIASIVAASKSYNQSLVAGAIFGFMATFLCMASIWLSYKISCVTQSTDAAV
Applications	Enzyme-linked Immunoabsorbent Assay Western Blot (Recombinant protein) Antibody Production Protein Array

 Tel: 1-631-559-9269 1-516-512-3133

 Email: info@creative-biomart.com  Fax: 1-631-938-8127

 45-1 Ramsey Road, Shirley, NY 11967, USA

Notes	Best use within three months from the date of receipt of this protein.
Storage	Store at -80 centigrade. Aliquot to avoid repeated freezing and thawing.
Storage Buffer	50 mM Tris-HCl, 10 mM reduced Glutathione, pH=8.0 in the elution buffer.
GENE INFORMATION	
Gene Name	CMTM7 CKLF-like MARVEL transmembrane domain containing 7 [Homo sapiens]
Official Symbol	CMTM7
Synonyms	CMTM7; CKLF-like MARVEL transmembrane domain containing 7; chemokine like factor super family 7 , chemokine like factor superfamily 7 , CKLFSF7; CKLF-like MARVEL transmembrane domain-containing protein 7; FLJ30992; chemokine-like factor superfamily 7; chemokine-like factor super family 7; chemokine-like factor superfamily member 7; chemokine-like factor super family member 7 variant 2; CKLFSF7;
Gene ID	112616
mRNA Refseq	NM_138410
Protein Refseq	NP_612419
MIM	607890
UniProt ID	Q96FZ5

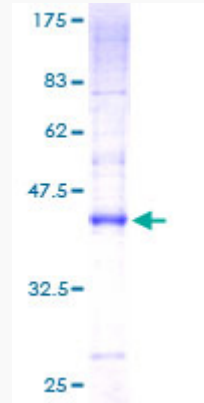
 Tel: 1-631-559-9269 1-516-512-3133

 Email: info@creative-biomart.com  Fax: 1-631-938-8127

 45-1 Ramsey Road, Shirley, NY 11967, USA

Quality Control

Testing:



12.5% SDS-PAGE Stained with Coomassie Blue.

 Tel: 1-631-559-9269 1-516-512-3133

 Email: info@creative-biomart.com  Fax: 1-631-938-8127

 45-1 Ramsey Road, Shirley, NY 11967, USA