

# Recombinant Human CMTM7 Protein, Myc/DDK-tagged, C13 and N15-labeled

**Cat. No.** CMTM7-6313H    **Lot. No.** (See product label)

## SPECIFICATION

<b>Product Overview</b>	CMTM7 MS Standard C13 and N15-labeled recombinant protein (NP_852137) with a C-terminal MYC/DDK tag, was expressed in HEK293 cells.
<b>Species</b>	Human
<b>Source</b>	HEK293
<b>Description</b>	This gene belongs to the chemokine-like factor gene superfamily, a novel family that is similar to the chemokine and transmembrane 4 superfamilies. This gene is one of several chemokine-like factor genes located in a cluster on chromosome 3. This gene acts as a tumor suppressor that regulates G1/S transition in the cell cycle, and epidermal growth factor receptor/protein kinase B signaling during tumor pathogenesis. Alternative splicing results in multiple transcript variants encoding different isoforms.
<b>Molecular Mass</b>	15.3 kDa
<b>AA Sequence</b>	MSHGAGLVRTTCSSGSALGPGAGAAQPSASPLEGLLDLSYPRTHAALLKVAQMVTL LIAFICVRSSLWTNYSAYSYFEVVTICDLIMILAFYLVHLFRFYRVLTCISWPLSIFGFMA TFLCMASIWLSYKISCVTQSTDAAVTRTRPLEQKLISEEDLAANDILDYKDDDDKV
<b>Purity</b>	> 80% as determined by SDS-PAGE and Coomassie blue staining
<b>Stability</b>	Stable for 3 months from receipt of products under proper storage and handling

 Tel: 1-631-559-9269    1-516-512-3133

 Email: [info@creative-biomart.com](mailto:info@creative-biomart.com)     Fax: 1-631-938-8127

 45-1 Ramsey Road, Shirley, NY 11967, USA

conditions.

**Storage** Store at -80 centigrade. Avoid repeated freeze-thaw cycles.

**Concentration** 50 µg/mL as determined by BCA

**Storage Buffer** 100 mM glycine, 25 mM Tris-HCl, pH 7.3.

## GENE INFORMATION

**Gene Name** CMTM7 CKLF-like MARVEL transmembrane domain containing 7 [ Homo sapiens (human) ]

**Official Symbol** CMTM7

**Synonyms** CMTM7; CKLF-like MARVEL transmembrane domain containing 7; chemokine like factor super family 7, chemokine like factor superfamily 7, CKLFSF7; CKLF-like MARVEL transmembrane domain-containing protein 7; FLJ30992; chemokine-like factor superfamily 7; chemokine-like factor super family 7; chemokine-like factor superfamily member 7; chemokine-like factor super family member 7 variant 2; CKLFSF7;

**Gene ID** 112616

**mRNA Refseq** NM\_181472

**Protein Refseq** NP\_852137

**MIM** 607890

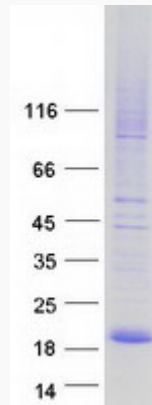
**UniProt ID** Q96FZ5

 Tel: 1-631-559-9269 1-516-512-3133

 Email: [info@creative-biomart.com](mailto:info@creative-biomart.com)  Fax: 1-631-938-8127

 45-1 Ramsey Road, Shirley, NY 11967, USA

**SDS-PAGE**



 Tel: 1-631-559-9269 1-516-512-3133

 Email: [info@creative-biomart.com](mailto:info@creative-biomart.com)  Fax: 1-631-938-8127

 45-1 Ramsey Road, Shirley, NY 11967, USA