

Recombinant Human CMTM8 protein, His & T7-tagged

Cat. No. CMTM8-1462H **Lot. No.** (See product label)

SPECIFICATION

Product Overview	Recombinant Human CMTM8 aa. (Met1~Gln173 (Accession # Q8IZV2)) fused with N-terminal His & T7 tag was produced in E. coli cells.
Species	Human
Source	E.coli
ProteinLength	Met1~Gln173
Description	This gene belongs to the chemokine-like factor gene superfamily, a novel family that is similar to the chemokine and the transmembrane 4 superfamilies. This gene is one of several chemokine-like factor genes located in a cluster on chromosome 3. This gene acts as a tumor suppressor, and plays a role in regulating the migration of tumor cells. The encoded protein is thought to function as a negative regulator of epidermal growth factor-induced signaling. Alternative splicing results in multiple transcript variants encoding different isoforms.
Form	Freeze-dried powder
Molecular Mass	Predicted Molecular Mass: 23.4kDa
Endotoxin	<1.0EU per 1ug (determined by the LAL method)
Purity	>95%

 Tel: 1-631-559-9269 1-516-512-3133

 Email: info@creative-biomart.com  Fax: 1-631-938-8127

 45-1 Ramsey Road, Shirley, NY 11967, USA

Applications	SDS-PAGE; WB; ELISA; IP.
Stability	The thermal stability is described by the loss rate. The loss rate was determined by accelerated thermal degradation test, that is, incubate the protein at 37°C for 48h, and no obvious degradation and precipitation were observed. The loss rate is less than 5% within the expiration date under appropriate storage condition.
Storage	Avoid repeated freeze/thaw cycles. Store at 2-8°C for one month. Aliquot and store at -80°C for 12 months.
Storage buffer	Supplied as lyophilized form in PBS, pH7.4, containing 5% trehalose, 0.01% sarcosyl.
Reconstitution	Reconstitute in sterile PBS, pH7.2-pH7.4.
Isoelectric Point	7.1

GENE INFORMATION

Gene Name	CMTM8 CKLF like MARVEL transmembrane domain containing 8 [Homo sapiens (human)]
Official Symbol	CMTM8
Synonyms	CMTM8; CKLF like MARVEL transmembrane domain containing 8; CKLFSF8; CKLFSF8-V2; CKLF-like MARVEL transmembrane domain-containing protein 8; chemokine-like factor superfamily member 8
Gene ID	152189
mRNA Refseq	NM_001320308.1

 Tel: 1-631-559-9269 1-516-512-3133

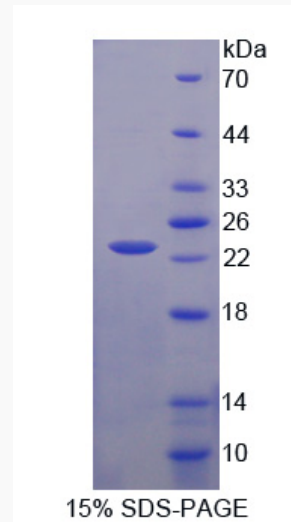
 Email: info@creative-biomart.com  Fax: 1-631-938-8127

 45-1 Ramsey Road, Shirley, NY 11967, USA

Protein Refseq NP_001307237.1

UniProt ID Q8IZV2

SDS-PAGE



 Tel: 1-631-559-9269 1-516-512-3133

 Email: info@creative-biomart.com  Fax: 1-631-938-8127

 45-1 Ramsey Road, Shirley, NY 11967, USA