

Recombinant Human CMTM8 Protein, GST-tagged

Cat. No. CMTM8-1547H Lot. No. (See product label)

SPECIFICATION

Product Overview	Human CMTM8 full-length ORF (AAH41390, 1 a.a. - 173 a.a.) recombinant protein with GST-tag at N-terminal.
Species	Human
Source	Wheat Germ
Description	This gene belongs to the chemokine-like factor gene superfamily, a novel family that is similar to the chemokine and the transmembrane 4 superfamilies. This gene is one of several chemokine-like factor genes located in a cluster on chromosome 3. This gene acts as a tumor suppressor, and plays a role in regulating the migration of tumor cells. The encoded protein is thought to function as a negative regulator of epidermal growth factor-induced signaling. Alternative splicing results in multiple transcript variants encoding different isoforms. [provided by RefSeq, Feb 2016]
Molecular Mass	44.77 kDa
AA Sequence	MEEPQRARSHTVTTTASSFAENFSTSSSSSFAYDREFLRTLHGFLIVAEIVLGLLVWTLI AGTEYFRVPAFGWVMFVAVSYWVLTVFLLIYITMTYTRIPQVPWTTVGLCFNGSAFV LYLSAAVVDASSVSPERDSHNFNSWAASSFFAFLVTICYAGNTYFSFIAWRSRTIQ
Applications	Enzyme-linked Immunoabsorbent Assay Western Blot (Recombinant protein) Antibody Production Protein Array

 Tel: 1-631-559-9269 1-516-512-3133

 Email: info@creative-biomart.com  Fax: 1-631-938-8127

 45-1 Ramsey Road, Shirley, NY 11967, USA

Notes	Best use within three months from the date of receipt of this protein.
Storage	Store at -80 centigrade. Aliquot to avoid repeated freezing and thawing.
Storage Buffer	50 mM Tris-HCl, 10 mM reduced Glutathione, pH=8.0 in the elution buffer.
GENE INFORMATION	
Gene Name	CMTM8 CKLF-like MARVEL transmembrane domain containing 8 [Homo sapiens]
Official Symbol	CMTM8
Synonyms	CMTM8; CKLF-like MARVEL transmembrane domain containing 8; chemokine like factor super family 8 , chemokine like factor superfamily 8 , CKLFSF8; CKLF-like MARVEL transmembrane domain-containing protein 8; chemokine-like factor superfamily 8; chemokine-like factor super family 8; chemokine-like factor superfamily member 8; CKLFSF8; CKLFSF8-V2;
Gene ID	152189
mRNA Refseq	NM_178868
Protein Refseq	NP_849199
MIM	607891
UniProt ID	Q8IZV2

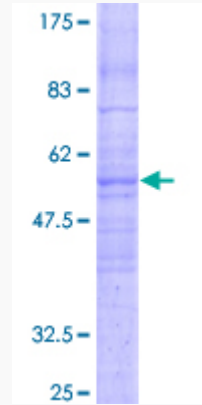
 Tel: 1-631-559-9269 1-516-512-3133

 Email: info@creative-biomart.com  Fax: 1-631-938-8127

 45-1 Ramsey Road, Shirley, NY 11967, USA

Quality Control

Testing:



12.5% SDS-PAGE Stained with Coomassie Blue.

 Tel: 1-631-559-9269 1-516-512-3133

 Email: info@creative-biomart.com  Fax: 1-631-938-8127

 45-1 Ramsey Road, Shirley, NY 11967, USA