

## Recombinant Human CNDP1 Protein, GST-tagged

Cat. No. CNDP1-1552H Lot. No. (See product label)

### SPECIFICATION

<b>Product Overview</b>	Human CNDP1 full-length ORF ( NP_116038.4, 1 a.a. - 507 a.a.) recombinant protein with GST-tag at N-terminal.
<b>Species</b>	Human
<b>Source</b>	Wheat Germ
<b>Description</b>	This gene encodes a member of the M20 metalloprotease family. The encoded protein is specifically expressed in the brain, is a homodimeric dipeptidase which was identified as human carnosinase. This gene contains trinucleotide (CTG) repeat length polymorphism in the coding region. [provided by RefSeq, Jul 2008]
<b>Molecular Mass</b>	83.1 kDa
<b>AA Sequence</b>	MDPKLGRMAASLLAVLLLLLLERGMFSSPSPPPALLEKVFQYIDLHQDEFVQTLKEWV AIESDSVQPVPRFRQELFRMMAVAADTLQRLGARVASVDMGPQQLPDGQSLPIPPV ILAELGSDPTKGTVCFYGHLDVQPADRGDGLWLTDPYVLTEVDGKLYGRGATDNKGP VLAWINAVSAFRALEQDLPVNIKFIIEGMEEAGSVALEELVEKEKDRFFSGVDYIVISD NLWISQRKPAITYGTRGNSYFMVEVKCRDQDFHSGTFGGILHEPMADLVALLGSLVD SSGHILVPGIYDEVVPLTEEEINTYKAIHLDLEEYRNSSRVEKFLFDTKEEILMHLWRY PSLSIHGIEGAFDEPGTKVIPGRVIGKFSIRLVPHMNVSAVEKQVTRHLEDVFSKRN SSNMVVSMTLGLHPWIANIDDTQYLAAKRAIRTVFGTEPDMIRDGSTIPIAKMFQEIV HKSVVLIPLGAVDDGEHSQNEKINRWNYIEGTKLFAAFFLEMAQLH
<b>Applications</b>	Enzyme-linked Immunoabsorbent Assay

 Tel: 1-631-559-9269 1-516-512-3133

 Email: [info@creative-biomart.com](mailto:info@creative-biomart.com)  Fax: 1-631-938-8127

 45-1 Ramsey Road, Shirley, NY 11967, USA

	Western Blot (Recombinant protein) Antibody Production Protein Array
<b>Notes</b>	Best use within three months from the date of receipt of this protein.
<b>Storage</b>	Store at -80 centigrade. Aliquot to avoid repeated freezing and thawing.
<b>Storage Buffer</b>	50 mM Tris-HCl, 10 mM reduced Glutathione, pH=8.0 in the elution buffer.
<b>GENE INFORMATION</b>	
<b>Gene Name</b>	CNDP1 carnosine dipeptidase 1 (metallopeptidase M20 family) [ Homo sapiens ]
<b>Official Symbol</b>	CNDP1
<b>Synonyms</b>	CNDP1; carnosine dipeptidase 1 (metallopeptidase M20 family); beta-Ala-His dipeptidase; carnosinase 1; CN1; CPGL2; glutamate carboxypeptidase like protein 2; HsT2308; MGC10825; serum carnosinase; CNDP dipeptidase 1; glutamate carboxypeptidase-like protein 2; MGC102737; MGC142072;
<b>Gene ID</b>	84735
<b>mRNA Refseq</b>	NM_032649
<b>Protein Refseq</b>	NP_116038
<b>MIM</b>	609064
<b>UniProt ID</b>	Q96KN2

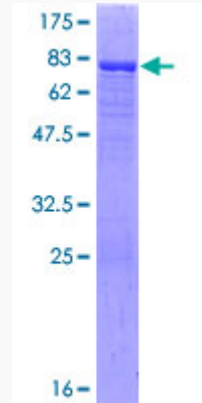
 Tel: 1-631-559-9269 1-516-512-3133

 Email: [info@creative-biomart.com](mailto:info@creative-biomart.com)  Fax: 1-631-938-8127

 45-1 Ramsey Road, Shirley, NY 11967, USA

**Quality Control**

**Testing:**



12.5% SDS-PAGE Stained with Coomassie Blue.

 Tel: 1-631-559-9269 1-516-512-3133

 Email: [info@creative-biomart.com](mailto:info@creative-biomart.com)  Fax: 1-631-938-8127

 45-1 Ramsey Road, Shirley, NY 11967, USA