

Recombinant Human CNDP1 Protein, His-tagged

Cat. No. CNDP1-210H Lot. No. (See product label)

SPECIFICATION

Product Overview	Recombinant Human CNDP1(Asp332~His507) fused with His tag at N-terminal was expressed in E. coli.
Species	Human
Source	E.coli
ProteinLength	Asp332~His507
Description	This gene encodes a member of the M20 metalloprotease family. The encoded protein is specifically expressed in the brain, is a homodimeric dipeptidase which was identified as human carnosinase. This gene contains trinucleotide (CTG) repeat length polymorphism in the coding region.
Form	PBS, pH7.4, containing 0.01% SKL, 1mM DTT, 5% Trehalose and Proclin300.
Molecular Mass	23.6kDa
Endotoxin	<1.0EU per 1g (determined by the LAL method)
Purity	> 99%
Applications	Positive Control; Immunogen; SDS-PAGE; WB. If bio-activity of the protein is needed, please check active protein.

 Tel: 1-631-559-9269 1-516-512-3133

 Email: info@creative-biomart.com  Fax: 1-631-938-8127

 45-1 Ramsey Road, Shirley, NY 11967, USA

Stability The thermal stability is described by the loss rate. The loss rate was determined by accelerated thermal degradation test, that is, incubate the protein at 37 centigrade for 48h, and no obvious degradation and precipitation were observed. The loss rate is less than 5% within the expiration date under appropriate storage condition.

Storage Avoid repeated freeze/thaw cycles. Store at 2-8 centigrade for one month. Aliquot and store at -80 centigrade for 12 months.

Reconstitution Reconstitute in PBS or others.

GENE INFORMATION

Gene Name [CNDP1 carnosine dipeptidase 1 \(metallopeptidase M20 family\) \[Homo sapiens \]](#)

Official Symbol [CNDP1](#)

Synonyms CNDP1; carnosine dipeptidase 1 (metallopeptidase M20 family); beta-Ala-His dipeptidase; carnosinase 1; CN1; CPGL2; glutamate carboxypeptidase like protein 2; HsT2308; MGC10825; serum carnosinase; CNDP dipeptidase 1; glutamate carboxypeptidase-like protein 2; MGC102737; MGC142072;

Gene ID [84735](#)

mRNA Refseq [NM_032649](#)

Protein Refseq [NP_116038](#)

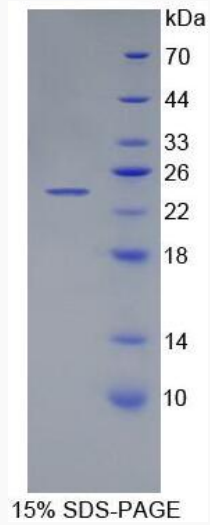
MIM [609064](#)

UniProt ID [Q96KN2](#)

 Tel: 1-631-559-9269 1-516-512-3133

 Email: info@creative-biomart.com  Fax: 1-631-938-8127

 45-1 Ramsey Road, Shirley, NY 11967, USA



 Tel: 1-631-559-9269 1-516-512-3133

 Email: info@creative-biomart.com  Fax: 1-631-938-8127

 45-1 Ramsey Road, Shirley, NY 11967, USA