

Recombinant Human CNDP1 Protein (Pro28-His507), C-His tagged

Cat. No. CNDP1-2241H Lot. No. (See product label)

SPECIFICATION

Product Overview	Recombinant human CNDP1 (Pro28-His507) fused with C-terminal His tag was expressed in Mammalian cells.
Species	Human
Source	Mammalian Cells
ProteinLength	Pro28-His507
Form	Lyophilized powder/frozen liquid
Molecular Mass	52.91 kDa
Purity	>90% as determined by SDS-PAGE
Notes	For research use only.
Storage	Use a manual defrost freezer and avoid repeated freeze thaw cycles. Store at 2 to 8 centigrade for one week. Store at -20 to -80 centigrade for twelve months from the date of receipt.
Storage Buffer	Supplied as solution form in PBS or lyophilized from PBS.
Reconstitution	Reconstitute in sterile water for a stock solution.

 Tel: 1-631-559-9269 1-516-512-3133

 Email: info@creative-biomart.com  Fax: 1-631-938-8127

 45-1 Ramsey Road, Shirley, NY 11967, USA

Shipping They are shipped out with dry ice/blue ice unless customers require otherwise.

GENE INFORMATION

Gene Name CNDP1 carnosine dipeptidase 1 (metallopeptidase M20 family) [Homo sapiens (human)]

Official Symbol CNDP1

Synonyms CNDP1; carnosine dipeptidase 1 (metallopeptidase M20 family); beta-Ala-His dipeptidase; carnosinase 1; CN1; CPGL2; glutamate carboxypeptidase like protein 2; HsT2308; MGC10825; serum carnosinase; CNDP dipeptidase 1; glutamate carboxypeptidase-like protein 2; MGC102737; MGC142072;

Gene ID 84735

mRNA Refseq NM_032649

Protein Refseq NP_116038

MIM 609064

UniProt ID Q96KN2

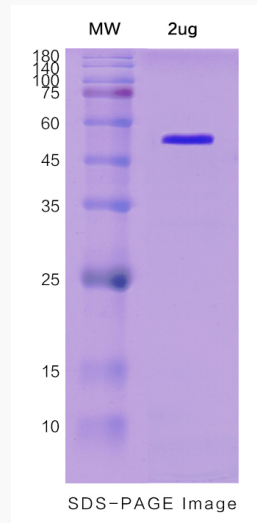
 Tel: 1-631-559-9269 1-516-512-3133

 Email: info@creative-biomart.com  Fax: 1-631-938-8127

 45-1 Ramsey Road, Shirley, NY 11967, USA



SDS-PAGE



Tel: 1-631-559-9269 1-516-512-3133

Email: info@creative-biomart.com Fax: 1-631-938-8127

45-1 Ramsey Road, Shirley, NY 11967, USA