

Active Recombinant Human CNDP1, His-tagged

Cat. No. CNDP1-272H Lot. No. (See product label)

SPECIFICATION

Product Overview Active Recombinant Human CNDP1(NP_116038.4) (Ser27-His507) was expressed in Human Cells, fused with a polyhistidine tag at the C-terminus.

Species Human

Source Human Cells

ProteinLength 27-507 aa

Form Lyophilized from sterile PBS, pH 7.4.

Bio-activity Measured by its ability to cleave carnosine (β -Ala-L-His) in a two-step assay. The specific activity is > 250 pmoles/min/ μ g.

Molecular Mass The recombinant human CNDP1 consists of 492 amino acids and has a calculated molecular mass of 55.3 kDa. As a result of glycosylation, the protein migrates as an approximately 60-65 kDa band in SDS-PAGE under reducing conditions.

Endotoxin Less than 1 EU per μ g by the LAL method.

Purity > 90 % as determined by SDS-PAGE and SEC-HPLC Analysis.

Storage Store it under sterile conditions at -20°C to -80°C upon receiving. Recommend to aliquot the protein into smaller quantities for optimal storage. Avoid repeated freeze-thaw cycles.

 Tel: 1-631-559-9269 1-516-512-3133

 Email: info@creative-biomart.com  Fax: 1-631-938-8127

 45-1 Ramsey Road, Shirley, NY 11967, USA

Reconstitution It is recommended that sterile water be added to the vial to prepare a stock solution of 0.2 ug/ul. Centrifuge the vial at 4°C before opening to recover the entire contents.

GENE INFORMATION

Gene Name [CNDP1 carnosine dipeptidase 1 \(metallopeptidase M20 family\) \[Homo sapiens \]](#)

Official Symbol [CNDP1](#)

Synonyms CNDP1; carnosine dipeptidase 1 (metallopeptidase M20 family); beta-Ala-His dipeptidase; carnosinase 1; CN1; CPGL2; glutamate carboxypeptidase like protein 2; HsT2308; MGC10825; serum carnosinase; CNDP dipeptidase 1; glutamate carboxypeptidase-like protein 2; MGC102737; MGC142072;

Gene ID [84735](#)

mRNA Refseq [NM_032649](#)

Protein Refseq [NP_116038](#)

MIM [609064](#)

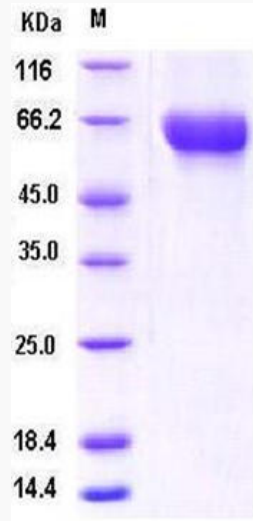
UniProt ID [Q96KN2](#)

 Tel: 1-631-559-9269 1-516-512-3133

 Email: info@creative-biomart.com  Fax: 1-631-938-8127

 45-1 Ramsey Road, Shirley, NY 11967, USA

SDS-PAGE



 Tel: 1-631-559-9269 1-516-512-3133

 Email: info@creative-biomart.com  Fax: 1-631-938-8127

 45-1 Ramsey Road, Shirley, NY 11967, USA