

Recombinant Human CNDP1 Protein, MYC/DDK-tagged, C13 and N15-labeled

Cat. No. CNDP1-335H **Lot. No.** (See product label)

SPECIFICATION

Product Overview

CNDP1 MS Standard C13 and N15-labeled recombinant protein (NP_116038) with a C-terminal MYC/DDK tag, was expressed in HEK293 cells.

Species

Human

Source

HEK293

Description

This gene encodes a member of the M20 metalloprotease family. The encoded protein is specifically expressed in the brain, is a homodimeric dipeptidase which was identified as human carnosinase. This gene contains trinucleotide (CTG) repeat length polymorphism in the coding region. [provided by RefSeq, Jul 2008]

Molecular Mass

56.8 kDa

AA Sequence

MDPKLGRMAASLLAVLLLLLLERGMFSSPSPPALLEKVFQYIDLHQDEFVQTLKEW
 VAIESDSVQPVPRFRQELFRMMAVAADTLQRLGARVASVDMGPPQQLPDGQSLPIPP
 VILAEFGSDPTKGTVCIFYGHLDVQPADRGDGLWLTDPYVLTEVDGKLYGRGATDNKG
 PVLAWINAVSAFRALEQDLPVNIKFIEGMEEAGSVALEELVEKEKDRFFSGVDYIVIS
 DNLWISQRKPAITYGTRGNSYFMVEVKCRDQDFHSGTFFGGILNEPMADLVALLGSLV
 DSSGHILVPGIYDEVVPLTEEEINTYKAIHLDL E EYRNSSRVEKFLFDTK EEILMHLWR
 YPSLSIHGIEGAFDEPGTKTVIPGRVIGKFSIRLVPHMNVSAVEKQVTRHLEDVFSKR
 NSSNKMVVSMTLGLHPWIANIDDTQYLAAKRAIRTVFGTEPDMIRDGSTIPIAKMFQEI
 VHKSVVLIPLGAVDDGEHSQNEKINRWNYIEGTKLFAAFFLEMAQLHTRTRPLEQKLI

 Tel: 1-631-559-9269 1-516-512-3133

 Email: info@creative-biomart.com  Fax: 1-631-938-8127

 45-1 Ramsey Road, Shirley, NY 11967, USA



SEEDLAANDILDYKDDDDKV

Purity > 80% as determined by SDS-PAGE and Coomassie blue staining

Stability Stable for 3 months from receipt of products under proper storage and handling conditions.

Storage Store at -80 centigrade. Avoid repeated freeze-thaw cycles.

Concentration 50 µg/mL as determined by BCA

Storage Buffer 100 mM glycine, 25 mM Tris-HCl, pH 7.3.

GENE INFORMATION

Gene Name CNDP1 carnosine dipeptidase 1 (metallopeptidase M20 family) [Homo sapiens (human)]

Official Symbol CNDP1

Synonyms CNDP1; carnosine dipeptidase 1 (metallopeptidase M20 family); beta-Ala-His dipeptidase; carnosinase 1; CN1; CPGL2; glutamate carboxypeptidase like protein 2; HsT2308; MGC10825; serum carnosinase; CNDP dipeptidase 1; glutamate carboxypeptidase-like protein 2; MGC102737; MGC142072;

Gene ID 84735

mRNA Refseq NM_032649

Protein Refseq NP_116038

Tel: 1-631-559-9269 1-516-512-3133

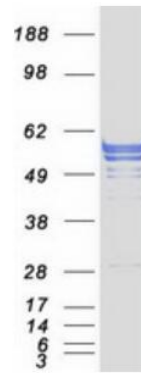
Email: info@creative-biomart.com Fax: 1-631-938-8127

45-1 Ramsey Road, Shirley, NY 11967, USA

MIM 609064

UniProt ID Q96KN2

SDS-PAGE



 Tel: 1-631-559-9269 1-516-512-3133

 Email: info@creative-biomart.com  Fax: 1-631-938-8127

 45-1 Ramsey Road, Shirley, NY 11967, USA