

Recombinant Human CNDP2 protein, His-tagged

Cat. No. CNDP2-1131H Lot. No. (See product label)

SPECIFICATION

Product Overview	Recombinant Human CNDP2 protein(CAC69883.1) (Met 1-Asp 475) was expressed in Insect Cells, fused with a polyhistidine tag at the C-terminus.
Species	Human
Source	Insect Cells
ProteinLength	1-475 aa
Form	Lyophilized from sterile 50mM Tris, 100mM NaCl, 0.5mM PMSF, pH 8.0.
Molecular Mass	The secreted recombinant human CNDP2 consists of 485 amino acids and predicts a molecular mass of 54.2 kDa as estimated in SDS-PAGE under reducing conditions.
Endotoxin	< 1.0 EU per µg of the protein as determined by the LAL method.
Purity	> 94 % as determined by SDS-PAGE
Storage	Store it under sterile conditions at -20°C to -80°C upon receiving. Recommend to aliquot the protein into smaller quantities for optimal storage. Avoid repeated freeze-thaw cycles.
Reconstitution	It is recommended that sterile water be added to the vial to prepare a stock solution of 0.2 ug/ul. Centrifuge the vial at 4°C before opening to recover the entire contents.

 Tel: 1-631-559-9269 1-516-512-3133

 Email: info@creative-biomart.com  Fax: 1-631-938-8127

 45-1 Ramsey Road, Shirley, NY 11967, USA

GENE INFORMATION

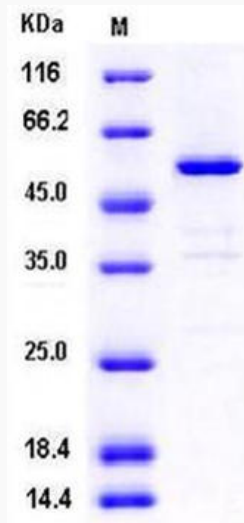
Gene Name	CNDP2 CNDP dipeptidase 2 (metallopeptidase M20 family) [Homo sapiens]
Official Symbol	CNDP2
Synonyms	CNDP2; CNDP dipeptidase 2 (metallopeptidase M20 family); PEPA, peptidase A; cytosolic non-specific dipeptidase; CN2; CPGL; cytosolic nonspecific dipeptidase (EC 3.4.13.18); FLJ10830; HsT2298; peptidase A; cytosolic nonspecific dipeptidase; glutamate carboxypeptidase-like protein 1; PEPA; FLJ35544;
Gene ID	55748
mRNA Refseq	NM_001168499
Protein Refseq	NP_001161971
MIM	169800
UniProt ID	Q96KP4

 Tel: 1-631-559-9269 1-516-512-3133

 Email: info@creative-biomart.com  Fax: 1-631-938-8127

 45-1 Ramsey Road, Shirley, NY 11967, USA

SDS-PAGE



 Tel: 1-631-559-9269 1-516-512-3133

 Email: info@creative-biomart.com  Fax: 1-631-938-8127

 45-1 Ramsey Road, Shirley, NY 11967, USA