

Recombinant Human CNDP2 Protein, GST-tagged

Cat. No. CNDP2-1553H Lot. No. (See product label)

SPECIFICATION

Product Overview	Human CNDP2 full-length ORF (AAH01375.1, 1 a.a. - 475 a.a.) recombinant protein with GST-tag at N-terminal.
Species	Human
Source	Wheat Germ
Description	CNDP2, also known as tissue carnosinase and peptidase A (EC 3.4.13.18), is a nonspecific dipeptidase rather than a selective carnosinase (Teufel et al., 2003 [PubMed 12473676]).[supplied by OMIM, Mar 2008]
Molecular Mass	79.3 kDa
AA Sequence	<p>MAALTLFKYIDENQDRYIKKLAKWVAIQSVSAWPEKRGEIRRMMEVAAADV KQLGG SVELVDIGKQKLPDGSEIPLPPILLGRLGSDPQKKTVCYGHLDVQPALEDGWDSEP FTLVERDGKLYGRGSTDDKGPVAGWINALEAYQKTGQEIPVNVVRFCLGMEESGSE GLDELIFARKDTFFKDVDYVCISDNYWLGKKKPCITYGLRGICYFFIEVECSNKDLHS GVYGGSVHEAMTDLILLMGSLVDKRGNILIPGINEAAVATEEEHKLYDDIDFDIEEFA KDVGAQILLHSHKKDILMHRWRYPSLSLHGIEGAFSGSGAKTVIPRKVVGKFSIRLVP NMTPEVVGEQVTSYLTKKFAELRSPNEFKVYMGHGGKPWVSDFSHPHYLAGRRAM KTVFGVEPDLTREGGSIPVTLTFQEATGKNVMLLPVGSADDGAHSQNEKLNRYNYIE GTKMLAAYLYEVSQ LKD</p>
Applications	Enzyme-linked Immunoabsorbent Assay Western Blot (Recombinant protein)

 Tel: 1-631-559-9269 1-516-512-3133

 Email: info@creative-biomart.com  Fax: 1-631-938-8127

 45-1 Ramsey Road, Shirley, NY 11967, USA

	Antibody Production Protein Array
Notes	Best use within three months from the date of receipt of this protein.
Storage	Store at -80 centigrade. Aliquot to avoid repeated freezing and thawing.
Storage Buffer	50 mM Tris-HCl, 10 mM reduced Glutathione, pH=8.0 in the elution buffer.
GENE INFORMATION	
Gene Name	CNDP2 CNDP dipeptidase 2 (metallopeptidase M20 family) [Homo sapiens]
Official Symbol	CNDP2
Synonyms	CNDP2; CNDP dipeptidase 2 (metallopeptidase M20 family); PEPA, peptidase A; cytosolic non-specific dipeptidase; CN2; CPGL; cytosolic nonspecific dipeptidase (EC 3.4.13.18); FLJ10830; HsT2298; peptidase A; cytosolic nonspecific dipeptidase; glutamate carboxypeptidase-like protein 1; PEPA; FLJ35544;
Gene ID	55748
mRNA Refseq	NM_001168499
Protein Refseq	NP_001161971
MIM	169800
UniProt ID	Q96KP4

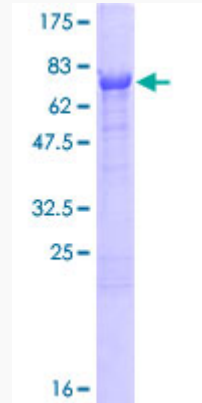
 Tel: 1-631-559-9269 1-516-512-3133

 Email: info@creative-biomart.com  Fax: 1-631-938-8127

 45-1 Ramsey Road, Shirley, NY 11967, USA

Quality Control

Testing:



12.5% SDS-PAGE Stained with Coomassie Blue.

 Tel: 1-631-559-9269 1-516-512-3133

 Email: info@creative-biomart.com  Fax: 1-631-938-8127

 45-1 Ramsey Road, Shirley, NY 11967, USA