

Recombinant Human CNDP2 Protein, Myc/DDK-tagged, C13 and N15-labeled

Cat. No. CNDP2-2647H Lot. No. (See product label)

SPECIFICATION

Product Overview	CNDP2 MS Standard C13 and N15-labeled recombinant protein (NP_060705) with a C-terminal MYC/DDK tag, was expressed in HEK293 cells.
Species	Human
Source	HEK293
Description	CNDP2, also known as tissue carnosinase and peptidase A (EC 3.4.13.18), is a nonspecific dipeptidase rather than a selective carnosinase.
Molecular Mass	52.9 kDa
AA Sequence	<p>MAALTTLFKYIDENQDRYIKKLAKWVAIQSVSAWPEKRGEIRRMMEVAAADV KQLGG SVELVDIGKQKLPDGSEIPLPPILLGRLGSDPQKKTVCYGHLDVQPALEDGWDSEP FTLVERDGKLYGRGSTDDKGPVAGWINALEAYQKTGQEIPVNVVRF CLEGMEESEGSE GLDELIFARKDTFFKDVVDYVCISDNYWLGKKKPCITYGLRGICYFFIEVECSNKDLHS GVYGGSVHEAMTDLILLMGSLVDKRGNILIPGINEA VAAVTEEEHKLYDDIDFDIEEFA KDVGAQILLHSHKKDILMHRWRYPSLSLHGIEGAFSGSGAKTVIPRKVVGKFSIRLVP NMTPEVVGEQVTSYLTKKFAELRSPNEFKVYMGHGGKPWVSDFSHPHYLAGRRAM KTVFGVEPDLTREGGSIPVTLTFQEATGKNVMLLPVGSADDGAHSQNEKLNRYNYIE GTKMLAAYLYEVSQLKDTRTRPLEQKLISEEDLAANDILDYKDDDDKV</p>
Purity	> 80% as determined by SDS-PAGE and Coomassie blue staining

 Tel: 1-631-559-9269 1-516-512-3133

 Email: info@creative-biomart.com  Fax: 1-631-938-8127

 45-1 Ramsey Road, Shirley, NY 11967, USA

Stability	Stable for 3 months from receipt of products under proper storage and handling conditions.
Storage	Store at -80 centigrade. Avoid repeated freeze-thaw cycles.
Concentration	50 µg/mL as determined by BCA
Storage Buffer	100 mM glycine, 25 mM Tris-HCl, pH 7.3.

GENE INFORMATION

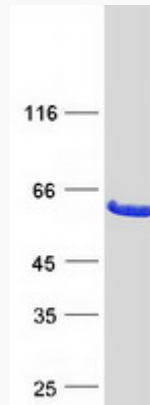
Gene Name	CNDP2 carnosine dipeptidase 2 [Homo sapiens (human)]
Official Symbol	CNDP2
Synonyms	CNDP2; CNDP dipeptidase 2 (metallopeptidase M20 family); PEPA, peptidase A; cytosolic non-specific dipeptidase; CN2; CPGL; cytosolic nonspecific dipeptidase (EC 3.4.13.18); FLJ10830; HsT2298; peptidase A; cytosolic nonspecific dipeptidase; glutamate carboxypeptidase-like protein 1; PEPA; FLJ35544;
Gene ID	55748
mRNA Refseq	NM_018235
Protein Refseq	NP_060705
MIM	169800
UniProt ID	Q96KP4

 Tel: 1-631-559-9269 1-516-512-3133

 Email: info@creative-biomart.com  Fax: 1-631-938-8127

 45-1 Ramsey Road, Shirley, NY 11967, USA

SDS-PAGE



 Tel: 1-631-559-9269 1-516-512-3133

 Email: info@creative-biomart.com  Fax: 1-631-938-8127

 45-1 Ramsey Road, Shirley, NY 11967, USA