

Recombinant Full Length Human CNDP2 Protein, C-Flag-tagged

Cat. No. CNDP2-829HFL Lot. No. (See product label)

SPECIFICATION

Product Overview

Recombinant Full Length Human CNDP2 Protein, fused to Flag-tag at C-terminus, was expressed in Mammalian cells.

Species

Human

Source

Mammalian Cells

Description

CNDP2, also known as tissue carnosinase and peptidase A (EC 3.4.13.18), is a nonspecific dipeptidase rather than a selective carnosinase.

Form

25 mM Tris HCl, pH 7.3, 100 mM glycine, 10% glycerol.

Molecular Mass

52.7 kDa

AA Sequence

MAALTTLFKYIDENQDRYIKKLAKWVAIQSVSAWPEKRGGEIRRMMEVAAADV KQLGG
SVELVDIGKQKLP DGSEIPLPILLGRLGSDPQKKTVCYI GHLDVQPAAL EDGWDSE
PFTLVERDGLYGRGSTDDKGPVAGW INALEAYQKTGQEIPVNV RFCLEGMEE SG
SEGLDELIFARKDTFFKDV DYVCISDN YWLGKKKPCITYGL RGICYFFIEVECSNKDL
HSGVYGGSVHEAMTDLILLMGSLVDKRG NIPGINEAVAAVTEEEHKLYDDI DFDIE
EFAKDVGAQILLHSHK KDILMHRWRYP SLSLHGIEGAFSGSGAKTVIPR KVVGKFSIR
LVPNMTP EVVGEQVTSYLT KKF AELRSPNEFKVYMGHGGK PWVSDFSHPHYLAGR
RAMKTVFGVEPDLTREGGSIPV
TLTFQEATGKNVMLLPVGSADDGAHSQNEKLNRYNYIEGTKMLAAYLYEVSQ LKDT
RTRPLEQKLISEEDLAANDILDYKDDDDKV

Tel: 1-631-559-9269 1-516-512-3133

Email: info@creative-biomart.com Fax: 1-631-938-8127

45-1 Ramsey Road, Shirley, NY 11967, USA

Purity	> 80% as determined by SDS-PAGE and Coomassie blue staining.
Stability	Stable for 12 months from the date of receipt of the product under proper storage and handling conditions. Avoid repeated freeze-thaw cycles.
Storage	Store at -80 centigrade.
Concentration	>50 ug/mL as determined by microplate BCA method.
Preparation	Recombinant protein was captured through anti-DDK affinity column followed by conventional chromatography steps.
Full Length	Full L.

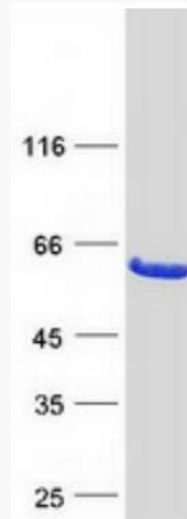
GENE INFORMATION

Gene Name	CNDP2 carnosine dipeptidase 2 [Homo sapiens (human)]
Official Symbol	CNDP2
Synonyms	CN2; CPGL; PEPA; HsT2298; HEL-S-13
Gene ID	55748
mRNA Refseq	NM_018235.3
Protein Refseq	NP_060705.2
MIM	169800
UniProt ID	Q96KP4

 Tel: 1-631-559-9269 1-516-512-3133

 Email: info@creative-biomart.com  Fax: 1-631-938-8127

 45-1 Ramsey Road, Shirley, NY 11967, USA



Coomassie blue staining of purified CNDP2 protein.

 Tel: 1-631-559-9269 1-516-512-3133

 Email: info@creative-biomart.com  Fax: 1-631-938-8127

 45-1 Ramsey Road, Shirley, NY 11967, USA