

Recombinant Human CNIH Protein, GST-tagged

Cat. No. CNIH-1559H **Lot. No.** (See product label)

SPECIFICATION

Product Overview	Human CNIH full-length ORF (NP_005767.1, 1 a.a. - 144 a.a.) recombinant protein with GST-tag at N-terminal.
Species	Human
Source	Wheat Germ
Description	CNIH1 (Cornichon Family AMPA Receptor Auxiliary Protein 1) is a Protein Coding gene. Diseases associated with CNIH1 include Schizophrenia. Among its related pathways are Transport to the Golgi and subsequent modification and Vesicle-mediated transport. An important paralog of this gene is CNIH3.
Molecular Mass	43.1 kDa
AA Sequence	MAFTFAAFCYMLALLLTAALIFFAIWHIIAFDELKTDYKNPIDQCNTLNPLVLPEYLIHAF FCVMFLCAAEWLTLGLNMPLLAYHIWRYMSRPVMSGPGLYDPTTIMNADILAYCQK EGWCKLAFYLLAFFYYLYGMIYVLVSS
Applications	Enzyme-linked Immunoabsorbent Assay Western Blot (Recombinant protein) Antibody Production Protein Array
Notes	Best use within three months from the date of receipt of this protein.

 Tel: 1-631-559-9269 1-516-512-3133

 Email: info@creative-biomart.com  Fax: 1-631-938-8127

 45-1 Ramsey Road, Shirley, NY 11967, USA

Storage Store at -80 centigrade. Aliquot to avoid repeated freezing and thawing.

Storage Buffer 50 mM Tris-HCl, 10 mM reduced Glutathione, pH=8.0 in the elution buffer.

GENE INFORMATION

Gene Name CNIH cornichon homolog (Drosophila) [Homo sapiens]

Official Symbol CNIH

Synonyms CNIH; cornichon homolog (Drosophila); protein cornichon homolog; CNIH1; CNIL; TGAM77; T-cell growth-associated molecule 77; MGC117156;

Gene ID 10175

mRNA Refseq NM_005776

Protein Refseq NP_005767

MIM 611287

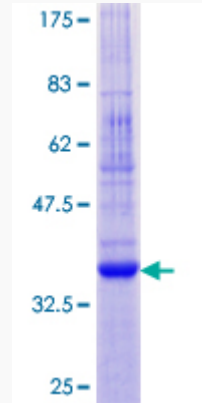
UniProt ID O95406

 Tel: 1-631-559-9269 1-516-512-3133

 Email: info@creative-biomart.com  Fax: 1-631-938-8127

 45-1 Ramsey Road, Shirley, NY 11967, USA

Quality Control
Testing:



12.5% SDS-PAGE Stained with Coomassie Blue.

 Tel: 1-631-559-9269 1-516-512-3133

 Email: info@creative-biomart.com  Fax: 1-631-938-8127

 45-1 Ramsey Road, Shirley, NY 11967, USA