

Recombinant Human CNIH2 Protein, GST-tagged

Cat. No. CNIH2-1560H Lot. No. (See product label)

SPECIFICATION

Product Overview Human CNIH2 full-length ORF (NP_872359.1, 1 a.a. - 160 a.a.) recombinant protein with GST-tag at N-terminal.

Species Human

Source Wheat Germ

Description The protein encoded by this gene is an auxiliary subunit of the ionotropic glutamate receptor of the AMPA subtype. AMPA receptors mediate fast synaptic neurotransmission in the central nervous system. This protein has been reported to interact with the Type I AMPA receptor regulatory protein isoform gamma-8 to control assembly of hippocampal AMPA receptor complexes, thereby modulating receptor gating and pharmacology. Alternative splicing results in multiple transcript variants. [provided by RefSeq, Aug 2012]

Molecular Mass 45.3 kDa

AA Sequence MAFTFAAFCYMLTLVLCASLIFFVIWHIIAFDELRTDFKNPIDQGNPARARERLKNIERI
CCLLRKLVVPEYSIHGLFCLMFLCAA EWVTLGLNIPLLFYHLWRYFHRPADGSEVMY
DAVSIMNADILNYCQKESWCKLAFYLLSFFYYLYSMVYTLVSF

Applications Enzyme-linked Immunoabsorbent Assay
Western Blot (Recombinant protein)
Antibody Production
Protein Array

 Tel: 1-631-559-9269 1-516-512-3133

 Email: info@creative-biomart.com  Fax: 1-631-938-8127

 45-1 Ramsey Road, Shirley, NY 11967, USA

Notes	Best use within three months from the date of receipt of this protein.
Storage	Store at -80 centigrade. Aliquot to avoid repeated freezing and thawing.
Storage Buffer	50 mM Tris-HCl, 10 mM reduced Glutathione, pH=8.0 in the elution buffer.
GENE INFORMATION	
Gene Name	CNIH2 cornichon homolog 2 (Drosophila) [Homo sapiens]
Official Symbol	CNIH2
Synonyms	Cnil; CNIH-2
Gene ID	254263
mRNA Refseq	NM_182553.2
Protein Refseq	NP_872359.1
MIM	611288
UniProt ID	Q6PI25

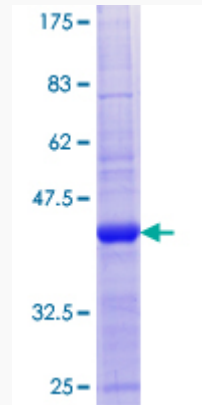
 Tel: 1-631-559-9269 1-516-512-3133

 Email: info@creative-biomart.com  Fax: 1-631-938-8127

 45-1 Ramsey Road, Shirley, NY 11967, USA

Quality Control

Testing:



12.5% SDS-PAGE Stained with Coomassie Blue.

 Tel: 1-631-559-9269 1-516-512-3133

 Email: info@creative-biomart.com  Fax: 1-631-938-8127

 45-1 Ramsey Road, Shirley, NY 11967, USA