

Recombinant Human CNIH2 Protein, Myc/DDK-tagged, C13 and N15-labeled

Cat. No. CNIH2-4500H **Lot. No.** (See product label)

SPECIFICATION

Product Overview	CNIH2 MS Standard C13 and N15-labeled recombinant protein (NP_872359) with a C-terminal MYC/DDK tag, was expressed in HEK293 cells.
Species	Human
Source	HEK293
Description	The protein encoded by this gene is an auxiliary subunit of the ionotropic glutamate receptor of the AMPA subtype. AMPA receptors mediate fast synaptic neurotransmission in the central nervous system. This protein has been reported to interact with the Type I AMPA receptor regulatory protein isoform gamma-8 to control assembly of hippocampal AMPA receptor complexes, thereby modulating receptor gating and pharmacology. Alternative splicing results in multiple transcript variants.
Molecular Mass	18.8 kDa
AA Sequence	MAFTFAAFCYMLTLVLCASLIFFVIWHIIAFDELRTDFKNPIDQGNPARARERLKNIERI CCLLRKLVVPEYSIHGLFCLMFLCAA EWVTLGLNIPLLFYHLWRYFHRPADGSEVMY DAVSIMNADILNYCQKESWCKLAFYLLSFFYYLYSMVYTLVSFTRTRPLEQKLISEED LAANDILDYKDDDDKV
Purity	> 80% as determined by SDS-PAGE and Coomassie blue staining
Stability	Stable for 3 months from receipt of products under proper storage and handling

 Tel: 1-631-559-9269 1-516-512-3133

 Email: info@creative-biomart.com  Fax: 1-631-938-8127

 45-1 Ramsey Road, Shirley, NY 11967, USA

conditions.

Storage Store at -80 centigrade. Avoid repeated freeze-thaw cycles.

Concentration 50 µg/mL as determined by BCA

Storage Buffer 100 mM glycine, 25 mM Tris-HCl, pH 7.3.

GENE INFORMATION

Gene Name [CNIH2 cornichon family AMPA receptor auxiliary protein 2 \[Homo sapiens \(human\) \]](#)

Official Symbol [CNIH2](#)

Synonyms CNIH2; cornichon family AMPA receptor auxiliary protein 2; Cnil; CNIH-2; protein cornichon homolog 2; cornichon homolog 2

Gene ID [254263](#)

mRNA Refseq [NM_182553](#)

Protein Refseq [NP_872359](#)

MIM [611288](#)

UniProt ID [Q6PI25](#)

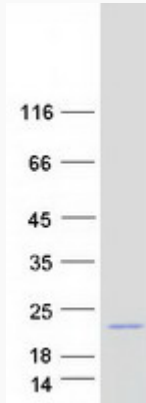
 Tel: 1-631-559-9269 1-516-512-3133

 Email: info@creative-biomart.com  Fax: 1-631-938-8127

 45-1 Ramsey Road, Shirley, NY 11967, USA



SDS-PAGE



Tel: 1-631-559-9269 1-516-512-3133

Email: info@creative-biomart.com Fax: 1-631-938-8127

45-1 Ramsey Road, Shirley, NY 11967, USA