

## Recombinant Human CNIH3 Protein, GST-tagged

Cat. No. CNIH3-1561H Lot. No. (See product label)

### SPECIFICATION

<b>Product Overview</b>	Human CNIH3 full-length ORF ( AAH22780, 1 a.a. - 160 a.a.) recombinant protein with GST-tag at N-terminal.
<b>Species</b>	Human
<b>Source</b>	Wheat Germ
<b>Description</b>	CNIH3 (Cornichon Family AMPA Receptor Auxiliary Protein 3) is a Protein Coding gene. Among its related pathways are Transport to the Golgi and subsequent modification and Vesicle-mediated transport. GO annotations related to this gene include channel regulator activity. An important paralog of this gene is CNIH2.
<b>Molecular Mass</b>	43.34 kDa
<b>AA Sequence</b>	MAFTFAAFCYMLSLVLCAALIFFAIWHIIAFDELRTDFKSPIDQCNPVHARERLRNIERI CFLLRKLVLP EYSIHS LFCIMFLCAQEWLTLGLNVPLLFYHFWRYFHCPADSSSELAYD PPVVMNADTLSYCQKEAWCKLAFYLLSFFYYLYCMIYTLVSS
<b>Applications</b>	Enzyme-linked Immunoabsorbent Assay Western Blot (Recombinant protein) Antibody Production Protein Array
<b>Notes</b>	Best use within three months from the date of receipt of this protein.

 Tel: 1-631-559-9269 1-516-512-3133

 Email: [info@creative-biomart.com](mailto:info@creative-biomart.com)  Fax: 1-631-938-8127

 45-1 Ramsey Road, Shirley, NY 11967, USA

**Storage** Store at -80 centigrade. Aliquot to avoid repeated freezing and thawing.

**Storage Buffer** 50 mM Tris-HCl, 10 mM reduced Glutathione, pH=8.0 in the elution buffer.

## GENE INFORMATION

**Gene Name** CNIH3 cornichon homolog 3 (Drosophila) [ Homo sapiens ]

**Official Symbol** CNIH3

**Synonyms** CNIH3; cornichon homolog 3 (Drosophila); protein cornichon homolog 3; CNIH 3; FLJ38993; CNIH-3;

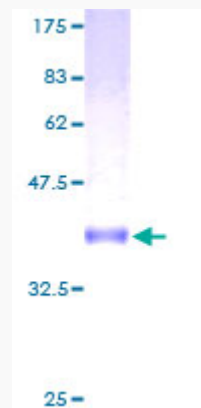
**Gene ID** 149111

**mRNA Refseq** NM\_152495

**Protein Refseq** NP\_689708

**UniProt ID** Q8TBE1

**Quality Control Testing:**



 Tel: 1-631-559-9269 1-516-512-3133

 Email: [info@creative-biomart.com](mailto:info@creative-biomart.com)  Fax: 1-631-938-8127

 45-1 Ramsey Road, Shirley, NY 11967, USA



12.5% SDS-PAGE Stained with Coomassie Blue.

 Tel: 1-631-559-9269 1-516-512-3133

 Email: [info@creative-biomart.com](mailto:info@creative-biomart.com)  Fax: 1-631-938-8127

 45-1 Ramsey Road, Shirley, NY 11967, USA