

Recombinant Human CNKSR2 Protein (650-800 aa), His-tagged

Cat. No. CNKSR2-1365H **Lot. No.** (See product label)

SPECIFICATION

Product Overview	Recombinant Human CNKSR2 Protein (650-800 aa) is produced by Yeast expression system. This protein is fused with a 6xHis tag at the N-terminal. Research Area: Signal Transduction. Protein Description: Partial.
Species	Human
Source	Yeast
ProteinLength	650-800 aa
Description	May function as an adapter protein or regulator of Ras signaling pathways.
Form	Tris-based buffer,50% glycerol
Molecular Mass	19.1 kDa
AA Sequence	AAEHLDDMNRWLNLRINMLTAGYAERERIKQEQDYWSESDKEEADTPSTPKQDSPP PPYDTYPRPPSMSCASPYVEAKHSRLSSTETSQSQSSHEEFRQEVTGSSAVSPIRK TASQRRSWQDLIETPLTSSGLHYLQTLPLEDSVFSDDAAI
Purity	> 90% as determined by SDS-PAGE.
Notes	Repeated freezing and thawing is not recommended. Store working aliquots at 4 centigrade for up to one week.

 Tel: 1-631-559-9269 1-516-512-3133

 Email: info@creative-biomart.com  Fax: 1-631-938-8127

 45-1 Ramsey Road, Shirley, NY 11967, USA

Storage The shelf life is related to many factors, storage state, buffer ingredients, storage temperature and the stability of the protein itself. Generally, the shelf life of liquid form is 6 months at -20 centigrade/-80 centigrade. The shelf life of lyophilized form is 12 months at -20 centigrade/-80 centigrade.

Concentration A hardcopy of COA with reconstitution instruction is sent along with the products. Please refer to it for detailed information.

GENE INFORMATION

Gene Name [CNKSR2 connector enhancer of kinase suppressor of Ras 2 \[Homo sapiens \]](#)

Official Symbol [CNKSR2](#)

Synonyms CNKSR2; CNK2; KIAA0902; KSR2; MAGUIN;

Gene ID [22866](#)

mRNA Refseq [NM_001168647](#)

Protein Refseq [NP_001162118](#)

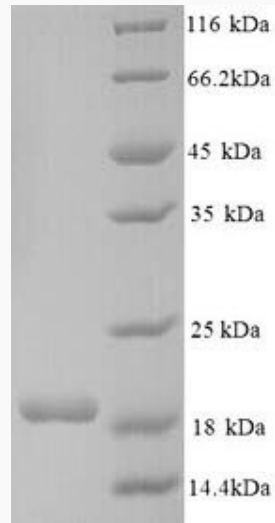
MIM [300724](#)

UniProt ID [Q8WXI2](#)

 Tel: 1-631-559-9269 1-516-512-3133

 Email: info@creative-biomart.com  Fax: 1-631-938-8127

 45-1 Ramsey Road, Shirley, NY 11967, USA



(Tris-Glycine gel) Discontinuous SDS-PAGE (reduced) with 5% enrichment gel and 15% separation gel.

Tel: 1-631-559-9269 1-516-512-3133

Email: info@creative-biomart.com Fax: 1-631-938-8127

45-1 Ramsey Road, Shirley, NY 11967, USA