

Recombinant Human CNN1 Protein, GST-tagged

Cat. No. CNN1-1566H Lot. No. (See product label)

SPECIFICATION

Product Overview	Human CNN1 full-length ORF (AAH22015, 1 a.a. - 297 a.a.) recombinant protein with GST-tag at N-terminal.
Species	Human
Source	Wheat Germ
Description	CNN1 (Calponin 1) is a Protein Coding gene. Diseases associated with CNN1 include Laryngeal Small Cell Carcinoma and Infantile Digital Fibromatosis. Among its related pathways are Endothelin Pathways and Myometrial Relaxation and Contraction Pathways. GO annotations related to this gene include actin binding and calmodulin binding. An important paralog of this gene is CNN3.
Molecular Mass	58.41 kDa
AA Sequence	MSSAHFNRPAYGLSAEVKNKLAQKYDHQREQELREWIEGVTGRRIGNNFMDGLK DGIILCEFINKLQPGSVKINESTQNWHQLENIGNFIKAITKYGVKPHDIFEANDLFENT NHTQVQSTLLALASMAKTKGNKVN/VGVKYAEKQERKFEPGKLREGRNIIGLQMGTN KFASQQGMTAYGTRRHLYDPKLGTDQPLDQATISLQMGTNKGASQAGMTAPGTRK QIFEPGLGMEHCDTLNVSLQMGSNKGASQRGMTVYGLPRQVYDPKYCLTPEYPEL GEPAHNHHAHNYNSA
Applications	Enzyme-linked Immunoabsorbent Assay Western Blot (Recombinant protein) Antibody Production

 Tel: 1-631-559-9269 1-516-512-3133

 Email: info@creative-biomart.com  Fax: 1-631-938-8127

 45-1 Ramsey Road, Shirley, NY 11967, USA

Protein Array

Notes	Best use within three months from the date of receipt of this protein.
Storage	Store at -80 centigrade. Aliquot to avoid repeated freezing and thawing.
Storage Buffer	50 mM Tris-HCl, 10 mM reduced Glutathione, pH=8.0 in the elution buffer.

GENE INFORMATION

Gene Name	CNN1 calponin 1, basic, smooth muscle [Homo sapiens]
Official Symbol	CNN1
Synonyms	CNN1; calponin 1, basic, smooth muscle; calponin-1; Sm Calp; SMCC; basic calponin; calponins, basic; calponin H1, smooth muscle; Sm-Calp;
Gene ID	1264
mRNA Refseq	NM_001299
Protein Refseq	NP_001290
MIM	600806
UniProt ID	P51911

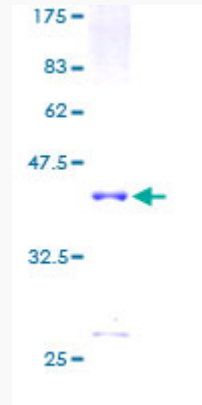
 Tel: 1-631-559-9269 1-516-512-3133

 Email: info@creative-biomart.com  Fax: 1-631-938-8127

 45-1 Ramsey Road, Shirley, NY 11967, USA

Quality Control

Testing:



12.5% SDS-PAGE Stained with Coomassie Blue.

 Tel: 1-631-559-9269 1-516-512-3133

 Email: info@creative-biomart.com  Fax: 1-631-938-8127

 45-1 Ramsey Road, Shirley, NY 11967, USA