

Recombinant Human CNN2 Protein, Myc/DDK-tagged, C13 and N15-labeled

Cat. No. CNN2-3796H **Lot. No.** (See product label)

SPECIFICATION

Product Overview

CNN2 MS Standard C13 and N15-labeled recombinant protein (NP_004359) with a C-terminal MYC/DDK tag, was expressed in HEK293 cells.

Species

Human

Source

HEK293

Description

The protein encoded by this gene, which can bind actin, calmodulin, troponin C, and tropomyosin, may function in the structural organization of actin filaments. The encoded protein could play a role in smooth muscle contraction and cell adhesion. Several pseudogenes of this gene have been identified, and are present on chromosomes 1, 2, 3, 6, 9, 11, 13, 15, 16, 21 and 22. Alternative splicing results in multiple transcript variants encoding different isoforms.

Molecular Mass

33.5 kDa

AA Sequence

MSSTQFNKGPSYGLSAEVKNRLLSKYDPQKEAELRTWIEGLTGLSIGPDFQKGLKD
 GTILCTLMNKLQPGSVPKINRSMQNWHQLENLSNFIKAMVSYGMNPVDLFEANDLF
 ESGNMTQVQVSLALAGKAKTKGLQSGVDIGVKYSEKQERNFDDATMKAGQCVIGL
 QMGTNKCASQSGMTAYGTRRHLYDPKNHILPPMDHSTISLQMGTNKCASQVGMTA
 PGTRRHIYDTKLGTDKCDNSSMSLQMGYTQGANQSGQVFGGLGRQIYDPKYCPQGT
 VADGAPSGTGDCPDPGEVPEYPPYYQEEAGYTRTRPLEQKLISEEDLAANDILDYKD
 DDDKV

 Tel: 1-631-559-9269 1-516-512-3133

 Email: info@creative-biomart.com  Fax: 1-631-938-8127

 45-1 Ramsey Road, Shirley, NY 11967, USA

Purity	> 80% as determined by SDS-PAGE and Coomassie blue staining
Stability	Stable for 3 months from receipt of products under proper storage and handling conditions.
Storage	Store at -80 centigrade. Avoid repeated freeze-thaw cycles.
Concentration	50 µg/mL as determined by BCA
Storage Buffer	100 mM glycine, 25 mM Tris-HCl, pH 7.3.

GENE INFORMATION

Gene Name	CNN2 calponin 2 [Homo sapiens (human)]
Official Symbol	CNN2
Synonyms	CNN2; calponin 2; calponin-2; neutral calponin; calponin H2, smooth muscle;
Gene ID	1265
mRNA Refseq	NM_004368
Protein Refseq	NP_004359
MIM	602373
UniProt ID	Q99439

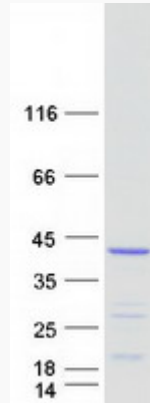
 Tel: 1-631-559-9269 1-516-512-3133

 Email: info@creative-biomart.com  Fax: 1-631-938-8127

 45-1 Ramsey Road, Shirley, NY 11967, USA



SDS-PAGE



Tel: 1-631-559-9269 1-516-512-3133

Email: info@creative-biomart.com Fax: 1-631-938-8127

45-1 Ramsey Road, Shirley, NY 11967, USA