

Recombinant Human CNN3 Protein, GST-tagged

Cat. No. CNN3-1569H Lot. No. (See product label)

SPECIFICATION

Product Overview	Human CNN3 full-length ORF (NP_001830.1, 1 a.a. - 329 a.a.) recombinant protein with GST-tag at N-terminal.
Species	Human
Source	Wheat Germ
Description	This gene encodes a protein with a markedly acidic C terminus; the basic N-terminus is highly homologous to the N-terminus of a related gene, CNN1. Members of the CNN gene family all contain similar tandemly repeated motifs. This encoded protein is associated with the cytoskeleton but is not involved in contraction. [provided by RefSeq, Jul 2008]
Molecular Mass	62.8 kDa
AA Sequence	MTHFNKGPSYGLSAEVKNKIASKYDHQAEEDLRNWIEEVTGMSIGPNFQLGLKDGIIIL CELINKLQPGSVKKNVNESSLNWPQLENIGNFIKAIQAYGMKPHDIFEANDLFENGNMT QVQTTLVALAGLAKTKGFHTTIDIGVKYAEKQTRRFDEGKLKAGQSVIGLQMGTNKC ASQAGMTAYGTRRHLYDPKMQTDKPFQTTISLQMGTNKGASQAGMLAPGTRRDI YDQKLTLPVDNSTISLQMGTNKVASQKGM SVYGLGRQVYDPKYCAAPTEPVIHNG SQGTGTNGSEISDSYQAEYPDEYHGEYQDDYPRDYQYSDQGIDY
Applications	Enzyme-linked Immunoabsorbent Assay Western Blot (Recombinant protein) Antibody Production

 Tel: 1-631-559-9269 1-516-512-3133

 Email: info@creative-biomart.com  Fax: 1-631-938-8127

 45-1 Ramsey Road, Shirley, NY 11967, USA

Protein Array

Notes	Best use within three months from the date of receipt of this protein.
Storage	Store at -80 centigrade. Aliquot to avoid repeated freezing and thawing.
Storage Buffer	50 mM Tris-HCl, 10 mM reduced Glutathione, pH=8.0 in the elution buffer.

GENE INFORMATION

Gene Name	CNN3 calponin 3, acidic [Homo sapiens]
Official Symbol	CNN3
Synonyms	CNN3; calponin 3, acidic; calponin-3; calponin, acidic isoform; dJ639P13.2.2 (acidic calponin 3);
Gene ID	1266
mRNA Refseq	NM_001839
Protein Refseq	NP_001830
MIM	602374
UniProt ID	Q15417

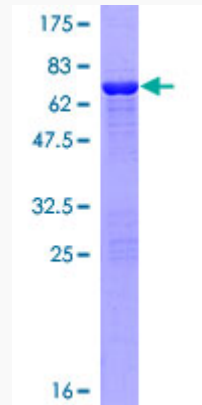
 Tel: 1-631-559-9269 1-516-512-3133

 Email: info@creative-biomart.com  Fax: 1-631-938-8127

 45-1 Ramsey Road, Shirley, NY 11967, USA

Quality Control

Testing:



12.5% SDS-PAGE Stained with Coomassie Blue.

 Tel: 1-631-559-9269 1-516-512-3133

 Email: info@creative-biomart.com  Fax: 1-631-938-8127

 45-1 Ramsey Road, Shirley, NY 11967, USA