

## Recombinant Human CNOT10 Protein, GST-tagged

Cat. No. CNOT10-1577H Lot. No. (See product label)

### SPECIFICATION

<b>Product Overview</b>	Human CNOT10 full-length ORF ( NP_056257.1, 1 a.a. - 744 a.a.) recombinant protein with GST-tag at N-terminal.
<b>Species</b>	Human
<b>Source</b>	Wheat Germ
<b>Description</b>	This gene encodes a member of the ancient conserved domain containing protein family. Members of this protein family contain a cyclin box motif and have structural similarity to the cyclins. The encoded protein may play a role in metal ion transport. Mutations in this gene are associated with Jalili syndrome which consists of cone-rod dystrophy and amelogenesis imperfecta. [provided by RefSeq, Feb 2010]
<b>Molecular Mass</b>	108.7 kDa
<b>AA Sequence</b>	<p>MAADKPADQGAEKHEGTGQSSGITDQEKELSTNAFQAFTSGNYDAQLQHLACLQDI  NKDDYKIILNTAVAEFFKSNQTTTDLNRQTLNQLKNQVHSAVEEMDGLDDVENSMLY  YNQAVILYHLRQYTEAISVGEKLYQFIEPFEEKFAQAVCFLLVDLYILTYQAEKALHLLA  VLEKMISQGNKNGKNETGNNNNKDGSNHKAESGALIEAAKSKIHQYKVRAYIQM  KSLKACKREIKSVMNTAGNSAPSLFLKSNFEYLRGNYRKAVKLLNSSNIAEHPPGFMK  TGECLRCMFWNNLGCIFAMSKHNLGIFYFKKALQENDNVCAQLSAGSTDPGKKFS  GRPMCTLLTNKRYELLYNCGIQLLHIGRPLAAFECLIEAVQVYHANPRLWLRLAECCI  AANKGTSEQETKGLPSKKGIVQSIVGQGYHRKIVLASQSIQNTVYNDGQSSAIPVAS  MEFAAICLRNALLLLPEEQQDPKQENGAKNSNQLGGNTESSSESSETCSSKSHDGDK</p>

 Tel: 1-631-559-9269 1-516-512-3133

 Email: [info@creative-biomart.com](mailto:info@creative-biomart.com)  Fax: 1-631-938-8127

 45-1 Ramsey Road, Shirley, NY 11967, USA

FIPAPPSSPLRKQELENLKCSILACSA YVALALGDNLMALNHADKLLQQPKLSGSLKF  
 LGHLYAAEALISLDRISDAITHLNPENVTDVSLGISSNEQDQGSDKGENEAMESSGKR  
 APQCYPSSVNSARTVMLFNLGSAYCLRSEYDKARKCLHQAASMIHPKEVPPEAILLA  
 VYLELQNGNTQLALQIIKRNQLLPAVKTHSEVRKKPVFQPVHPIQPIQMPAFTTVQRK

<b>Applications</b>	Enzyme-linked Immunoabsorbent Assay Western Blot (Recombinant protein) Antibody Production Protein Array
<b>Notes</b>	Best use within three months from the date of receipt of this protein.
<b>Storage</b>	Store at -80 centigrade. Aliquot to avoid repeated freezing and thawing.
<b>Storage Buffer</b>	50 mM Tris-HCl, 10 mM reduced Glutathione, pH=8.0 in the elution buffer.

## GENE INFORMATION

<b>Gene Name</b>	CNOT10 CCR4-NOT transcription complex, subunit 10 [ Homo sapiens ]
<b>Official Symbol</b>	CNOT10
<b>Synonyms</b>	CNOT10; CCR4-NOT transcription complex, subunit 10; CCR4-NOT transcription complex subunit 10; FLJ12890; FLJ13165; DKFZp434K115;
<b>Gene ID</b>	25904
<b>mRNA Refseq</b>	NM_001256741
<b>Protein Refseq</b>	NP_001243670

 Tel: 1-631-559-9269 1-516-512-3133

 Email: [info@creative-biomart.com](mailto:info@creative-biomart.com)  Fax: 1-631-938-8127

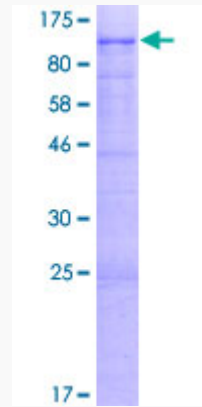
 45-1 Ramsey Road, Shirley, NY 11967, USA

UniProt ID

Q9H9A5

Quality Control

Testing:



12.5% SDS-PAGE Stained with Coomassie Blue.

 Tel: 1-631-559-9269 1-516-512-3133

 Email: [info@creative-biomart.com](mailto:info@creative-biomart.com)  Fax: 1-631-938-8127

 45-1 Ramsey Road, Shirley, NY 11967, USA