

Recombinant Human CNOT6 Protein, GST-tagged

Cat. No. CNOT6-1584H Lot. No. (See product label)

SPECIFICATION

Product Overview	Human CNOT6 full-length ORF (AAH27476.1, 1 a.a. - 92 a.a.) recombinant protein with GST-tag at N-terminal.
Species	Human
Source	Wheat Germ
Description	This gene encodes the catalytic component of the CCR4-NOT core transcriptional regulation complex. The encoded protein has a 3'-5' RNase activity and prefers polyadenylated substrates. The CCR4-NOT complex plays a role in many cellular processes, including miRNA-mediated repression, mRNA degradation, and transcriptional regulation. [provided by RefSeq, Dec 2014]
Molecular Mass	36.7 kDa
AA Sequence	MCIMTISSEGELELVGLMRLRKQLFLRSALCNHRSRELYGSGRGGALTHVVFVNGG CHLFIDAGTRVHLLDAKGLSFTQNVFICICYCLQYI
Applications	Enzyme-linked Immunoabsorbent Assay Western Blot (Recombinant protein) Antibody Production Protein Array
Notes	Best use within three months from the date of receipt of this protein.

 Tel: 1-631-559-9269 1-516-512-3133

 Email: info@creative-biomart.com  Fax: 1-631-938-8127

 45-1 Ramsey Road, Shirley, NY 11967, USA

Storage Store at -80 centigrade. Aliquot to avoid repeated freezing and thawing.

Storage Buffer 50 mM Tris-HCl, 10 mM reduced Glutathione, pH=8.0 in the elution buffer.

GENE INFORMATION

Gene Name CNOT6 CCR4-NOT transcription complex, subunit 6 [Homo sapiens]

Official Symbol CNOT6

Synonyms CNOT6; CCR4-NOT transcription complex, subunit 6; CCR4-NOT transcription complex subunit 6; CCR4; KIAA1194; cytoplasmic deadenylase; carbon catabolite repression 4 protein; carbon catabolite repressor protein 4 homolog;

Gene ID 57472

mRNA Refseq NM_015455

Protein Refseq NP_056270

MIM 608951

UniProt ID Q9ULM6

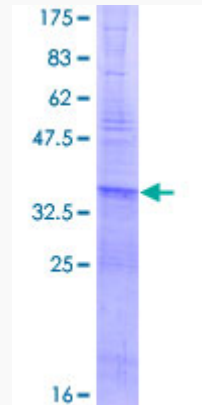
 Tel: 1-631-559-9269 1-516-512-3133

 Email: info@creative-biomart.com  Fax: 1-631-938-8127

 45-1 Ramsey Road, Shirley, NY 11967, USA

Quality Control

Testing:



12.5% SDS-PAGE Stained with Coomassie Blue.

 Tel: 1-631-559-9269 1-516-512-3133

 Email: info@creative-biomart.com  Fax: 1-631-938-8127

 45-1 Ramsey Road, Shirley, NY 11967, USA