

Recombinant Human CNOT8 Protein, GST-tagged

Cat. No. CNOT8-1589H **Lot. No.** (See product label)

SPECIFICATION

Product Overview	Human CNOT8 full-length ORF (AAH17366, 1 a.a. - 292 a.a.) recombinant protein with GST-tag at N-terminal.
Species	Human
Source	Wheat Germ
Description	CNOT8 (CCR4-NOT Transcription Complex Subunit 8) is a Protein Coding gene. Among its related pathways are Deadenylation-dependent mRNA decay and Gene Expression. GO annotations related to this gene include nucleic acid binding and RNA binding. An important paralog of this gene is CNOT7.
Molecular Mass	57.86 kDa
AA Sequence	MPAALVENSQVICEVWASNLEEEMRKIREIVLSYSYIAMDTEFPGVVVRPIGEFRSSI DYQYQLLR CNVDLLKIIQLGLTFTNEKGEYPSGINTWQFNFKFNLTEDMYSQDSIDLL ANSGLQFQKHEEEGIDTLHFAELLTSGVVLCDNVKWLSFHSYDFGYMVKLLTDS RLPEEEHEFFHILNLFPSIYDVKYLMKSCKNLKGGLQEVAQDLQDLQRIGRQHQAGS DSSLTGMAFFRMKELFFEDSIDDAKYCGRLYGLGTGVAQKQNEVDVSAQEKMSILAI INNMQQ
Applications	Enzyme-linked Immunoabsorbent Assay Western Blot (Recombinant protein) Antibody Production Protein Array

 Tel: 1-631-559-9269 1-516-512-3133

 Email: info@creative-biomart.com  Fax: 1-631-938-8127

 45-1 Ramsey Road, Shirley, NY 11967, USA

Notes	Best use within three months from the date of receipt of this protein.
Storage	Store at -80 centigrade. Aliquot to avoid repeated freezing and thawing.
Storage Buffer	50 mM Tris-HCl, 10 mM reduced Glutathione, pH=8.0 in the elution buffer.

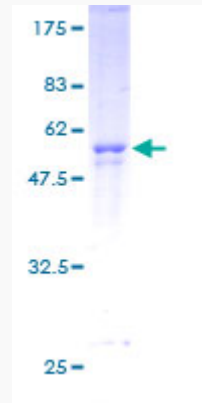
GENE INFORMATION

Gene Name	CNOT8 CCR4-NOT transcription complex, subunit 8 [Homo sapiens]
Official Symbol	CNOT8
Synonyms	CNOT8; CCR4-NOT transcription complex, subunit 8; POP2; CCR4-NOT transcription complex subunit 8; CAF1; CALIF; hCAF1; PGK promoter directed over production; CAF2; CALIFp; CAF1-like protein; CCR4-associated factor 8;
Gene ID	9337
mRNA Refseq	NM_004779
Protein Refseq	NP_004770
MIM	603731
UniProt ID	Q9UFF9

 Tel: 1-631-559-9269 1-516-512-3133

 Email: info@creative-biomart.com  Fax: 1-631-938-8127

 45-1 Ramsey Road, Shirley, NY 11967, USA



Quality Control

Testing:

12.5% SDS-PAGE Stained with Coomassie Blue.

 Tel: 1-631-559-9269 1-516-512-3133

 Email: info@creative-biomart.com  Fax: 1-631-938-8127

 45-1 Ramsey Road, Shirley, NY 11967, USA