

Recombinant Rat Cnr1 Protein

Cat. No. CNR1-1498R **Lot. No.** (See product label)

SPECIFICATION

| | |
|-------------------------|--|
| Product Overview | Recombinant Rat CNR1 Protein without tag was expressed in E. coli. |
| Species | Rat |
| Source | E.coli |
| Description | <p>Enables cannabinoid receptor activity. Involved in several processes, including positive regulation of acute inflammatory response; regulation of secretion by cell; and response to alkaloid. Located in membrane raft and plasma membrane.</p> <p>Colocalizes with intracellular membrane-bounded organelle. Used to study several diseases, including Parkinsonism; diabetic neuropathy; impotence; obesity; and peptic ulcer disease. Biomarker of status epilepticus. Human ortholog(s) of this gene implicated in obesity; schizophrenia; and type 2 diabetes mellitus. Orthologous to human CNR1 (cannabinoid receptor 1).</p> |
| Molecular Mass | 58.9 kDa |
| AA Sequence | <p>MKSILDGLADTTFRTITTDLLYVGSNDIQYEDIKGDMSKLGYPQKFPLTSFRGSPF QEKMTAGDNSPLVPAGDTTNITEFYNKSLSSFKENEENIQCGENFMDMECFMILNPS QQLAIAVLSLTLGTFTVLENLLVLCVILHSRSLRCRPSYHFIGSLAVADLLGSVIFVYSF VDFHVFHRKDSPNVFLFKLGGVTASFTASVGSFLTAIDRYISIHRPLAYKRIVTRPKA VVAFCLMWTIAIVIAVLPLLGWNCKKLQSVCSDFPLIDETYLMFWIGVTSVLLLFIVYA YMYILWKAHSHAVRMIQRGTQKSIIIHTSEDGKVQVTRPDQARMDIRLAKTLVLILVVL IICWGPLLAIMVYDVFGKMNKLIKTVFAFCSMLCLLNSTVNPIIYALRSKDLRHAFRSM</p> |

 Tel: 1-631-559-9269 1-516-512-3133

 Email: info@creative-biomart.com  Fax: 1-631-938-8127

 45-1 Ramsey Road, Shirley, NY 11967, USA

| | |
|-----------------------|--|
| | FPSCEGTAQPLDNSMGDSDCLHKHANNTASMHRAAESCICKSTVKIAKVTMSVSTDT SAEAL |
| Purity | ≥ 90% by SDS-PAGE |
| Storage | Store it at -20 to -80 centigrade. It is recommended that the protein be aliquoted for optimal storage. Avoid repeated freeze-thaw cycles. |
| Storage Buffer | Lyophilized from 20 mM Tris-HCl, 0.15 M NaCl, 0.05% DDM, 6% Trehalose, pH 8.0. The volume before lyophilization is 100 µL/vial. |
| Reconstitution | We recommend that this vial be briefly centrifuged prior to opening to bring the contents to the bottom. Please reconstitute protein in deionized sterile water to a concentration of 0.1-1.0 mg/mL. We recommend to add 5-50% of glycerol (final concentration) and aliquot for long-term storage at -20/-80 centigrade. Our default final concentration of glycerol is 50%. Customers could use it as reference. |

GENE INFORMATION

| | |
|------------------------|---|
| Gene Name | Cnr1 cannabinoid receptor 1 [Rattus norvegicus (Norway rat)] |
| Official Symbol | Cnr1 |
| Synonyms | Cnr1; cannabinoid receptor 1; SKR6R; cannabinoid receptor 1; CB-R; CB1; brain-type cannabinoid receptor; cannabinoid receptor 1 (brain) |
| Gene ID | 25248 |
| mRNA Refseq | NM_012784 |
| Protein Refseq | NP_036916 |

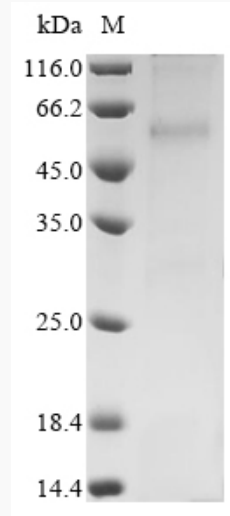
 Tel: 1-631-559-9269 1-516-512-3133

 Email: info@creative-biomart.com  Fax: 1-631-938-8127

 45-1 Ramsey Road, Shirley, NY 11967, USA

UniProt ID

P20272

SDS-PAGE

Observed band size: 59 kDa

(Tris-Glycine gel) Discontinuous SDS-PAGE (reduced) with 5% enrichment gel and 15% separation gel. Boiling SDS-treated samples may result in membrane protein aggregation. Incubation at 37 centigrade for 10 min is an effective alternative.

 Tel: 1-631-559-9269 1-516-512-3133 Email: info@creative-biomart.com  Fax: 1-631-938-8127 45-1 Ramsey Road, Shirley, NY 11967, USA