

Recombinant Human CNR1 Protein, GST-tagged

Cat. No. CNR1-1597H Lot. No. (See product label)

SPECIFICATION

Product Overview	Human CNR1 full-length ORF (NP_057167.2, 1 a.a. - 472 a.a.) recombinant protein with GST-tag at N-terminal.
Species	Human
Source	Wheat Germ
Description	<p>This gene encodes one of two cannabinoid receptors. The cannabinoids, principally delta-9-tetrahydrocannabinol and synthetic analogs, are psychoactive ingredients of marijuana. The cannabinoid receptors are members of the guanine-nucleotide-binding protein (G-protein) coupled receptor family, which inhibit adenylate cyclase activity in a dose-dependent, stereoselective and pertussis toxin-sensitive manner. The two receptors have been found to be involved in the cannabinoid-induced CNS effects (including alterations in mood and cognition) experienced by users of marijuana. Multiple transcript variants encoding two different protein isoforms have been described for this gene. [provided by RefSeq, May 2009]</p>
Molecular Mass	79.3 kDa
AA Sequence	<p>MKSILDGLADTTTERTITTDLLYVGSNDIQYEDIKGDMSKLGYPQKFPLTSFRGSPF QEKMTAGDNPQLVPADQVNITEFYNKSLSSFKENEENIQCGENFMDIECFMVLNPS QQLAIAVLSLTLGTFTVLENLLVLCVILHSRSLRCRPSYHFIGSLAVADLLGSVIFVYSFI DFHVFHRKDSRNVFLFKLGGVTASFTASVGSFLTAIDRYISIHRLPLAYKRIVTRPKAV VAFCLMWTIAIVIAVLPLLGNWCEKLQSVCSDFPHIDETYLMFWIGVTSVLLLFIYAY</p>

 Tel: 1-631-559-9269 1-516-512-3133

 Email: info@creative-biomart.com  Fax: 1-631-938-8127

 45-1 Ramsey Road, Shirley, NY 11967, USA

MYILWKAHSHAVRMIQRGTQKSIIIHTSEDGKVQVTRPDQARMDIRLAKTLVLILVLLII
 CWGPLLAIMVYDVFGKMNKLIKTVFAFCSMLCLLNSTVNPIIYALRSKDLRHAFRSMF
 PSCEGTAQPLDNSMGDSDCLHKHANNAASVHRAAESCICKSTVKIAKVTMSVSTDTS
 AEAL

Applications	Enzyme-linked Immunoabsorbent Assay Western Blot (Recombinant protein) Antibody Production Protein Array
Notes	Best use within three months from the date of receipt of this protein.
Storage	Store at -80 centigrade. Aliquot to avoid repeated freezing and thawing.
Storage Buffer	50 mM Tris-HCl, 10 mM reduced Glutathione, pH=8.0 in the elution buffer.

GENE INFORMATION

Gene Name	CNR1 cannabinoid receptor 1 (brain) [Homo sapiens]
Official Symbol	CNR1
Synonyms	CNR1; cannabinoid receptor 1 (brain); CNR; cannabinoid receptor 1; CANN6; CB R; CB1; CB1A; CB1K5; central cannabinoid receptor; CB-R; CB1R;
Gene ID	1268
mRNA Refseq	NM_001160226
Protein Refseq	NP_001153698

 Tel: 1-631-559-9269 1-516-512-3133

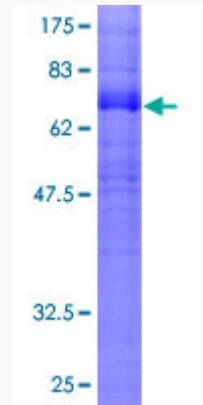
 Email: info@creative-biomart.com  Fax: 1-631-938-8127

 45-1 Ramsey Road, Shirley, NY 11967, USA

MIM 114610

UniProt ID P21554

**Quality Control
Testing:**



12.5% SDS-PAGE Stained with Coomassie Blue.

 Tel: 1-631-559-9269 1-516-512-3133

 Email: info@creative-biomart.com  Fax: 1-631-938-8127

 45-1 Ramsey Road, Shirley, NY 11967, USA