

Active Recombinant Human CNR1 Full Length Transmembrane protein, His-tagged

Cat. No. CNR1-718H Lot. No. (See product label)

SPECIFICATION

Product Overview	Recombinant Human CNR1 protein(P21554)(1-472aa), fused with C-terminal His tag, was expressed in HEK293.
Species	Human
Source	HEK293
ProteinLength	1-472aa
Form	<p>If the delivery form is liquid, the default storage buffer is Tris/PBS-based buffer, 5%-50% glycerol.</p> <p>If the delivery form is lyophilized powder, the buffer before lyophilization is Tris/PBS-based buffer, 6% Trehalose, pH 8.0.</p>
Bio-activity	Measured by its binding ability in a functional ELISA. Immobilized Human CNR1 at 10 µg/mL can bind Anti-CNR1 recombinant antibody, the EC50 is 41.72-63.54 ng/mL.
Molecular Mass	54.6 kDa
AA Sequence	<p>MKSILDGLADTTTFRITITDILLYVGSNDIQYEDIKGDMSKLGYPQKFPLTSFRGSPF</p> <p>QEKMTAGDNPQLVPADQVNITEFYNKSLSSFKENEENIQCGENFMDIECFMVLNPS</p> <p>QQLAIAVLSLTLGTFTVLENLLVLCVILHSRSLRCRPSYHFIGSLAVADLLGSVIFVYSFI</p> <p>DFHVFHRKDSRNVFLFKLGGVTASFTASVGSFLTAIDRYISHRPLAYKRIVTRPKAV</p> <p>VAFCLMWTIAIVIAVLPPLLGNWCEKLQSVCSDFPHIDETYLMFWIGVTSVLLLLFIVYAY</p>

 Tel: 1-631-559-9269 1-516-512-3133

 Email: info@creative-biomart.com  Fax: 1-631-938-8127

 45-1 Ramsey Road, Shirley, NY 11967, USA

MYILWKAHSHAVRMIQRGTQKSIIIHTSEDGKVQVTRPDQARMDIRLAKTLVLILVLLII
 CWGPLLAIMVYDVFGKMNKLIKTVFAFCMSMLCLLNSTVNPIIYALRSKDLRHAFRSMF
 PSCEGTAQPLDNSMGDSCLHKKHANNAASVHRAAESCICKSTVKIAKVTMSVSTDTS
 AEAL

Endotoxin Less than 1.0 EU/ug as determined by LAL method.

Storage Store at -20°C/-80°C upon receipt, aliquoting is necessary for mutiple use. Avoid repeated freeze-thaw cycles.

Reconstitution Please reconstitute protein in deionized sterile water to a concentration of 0.1-1.0 mg/mL. We recommend to add 5-50% of glycerol (final concentration) and aliquot for long-term storage at -20°C/-80°C.

GENE INFORMATION

Gene Name [CNR1 cannabinoid receptor 1 \(brain\) \[Homo sapiens \]](#)

Official Symbol [CNR1](#)

Synonyms CNR1; cannabinoid receptor 1 (brain); CNR; cannabinoid receptor 1; CANN6; CB R; CB1; CB1A; CB1K5; central cannabinoid receptor; CB-R; CB1R;

Gene ID [1268](#)

mRNA Refseq [NM_001160226](#)

Protein Refseq [NP_001153698](#)

MIM [114610](#)

 Tel: 1-631-559-9269 1-516-512-3133

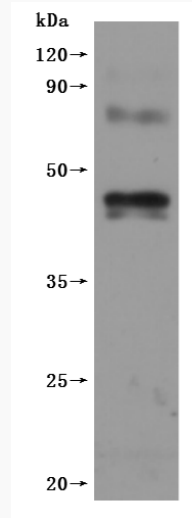
 Email: info@creative-biomart.com  Fax: 1-631-938-8127

 45-1 Ramsey Road, Shirley, NY 11967, USA

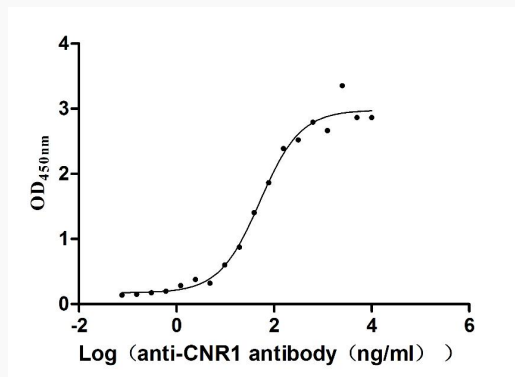
UniProt ID

P21554

SDS-PAGE



Activity



 Tel: 1-631-559-9269 1-516-512-3133

 Email: info@creative-biomart.com  Fax: 1-631-938-8127

 45-1 Ramsey Road, Shirley, NY 11967, USA