

Recombinant Full Length Human CNR2 Protein, N-GST-tagged

Cat. No. CNR2-13HFL Lot. No. (See product label)

SPECIFICATION

Product Overview	Human CNR2 full-length ORF (NP_001832.1, 1 a.a. - 360 a.a.) recombinant protein with GST-tag at N-terminal.
Species	Human
Source	Wheat Germ
Protein Length	1 a.a. - 360 a.a
Description	The cannabinoid delta-9-tetrahydrocannabinol is the principal psychoactive ingredient of marijuana. The proteins encoded by this gene and the cannabinoid receptor 1 (brain) (CNR1) gene have the characteristics of a guanine nucleotide-binding protein (G-protein)-coupled receptor for cannabinoids. They inhibit adenylate cyclase activity in a dose-dependent, stereoselective, and pertussis toxin-sensitive manner. These proteins have been found to be involved in the cannabinoid-induced CNS effects (including alterations in mood and cognition) experienced by users of marijuana. The cannabinoid receptors are members of family 1 of the G-protein-coupled receptors.
Form	50 mM Tris-HCl, 10 mM reduced Glutathione, pH=8.0 in the elution buffer.
Molecular Mass	66.1 kDa
AA Sequence	MEECWVTEIANGSKDGLDSNPMKDYMILSGPQKTAVAVLCTLLGLLSALENVAVLYLI LSSHQLRRKPSYLFIGSLAGADFLASVVFACSFVNFHVFHGVDSKAVFLKIGSVTMT FTASVGSLLLTAIDRYLCLRYPPSYKALLTRGRALVTLGIMWVLSALVSYLPLMGWTC

 Tel: 1-631-559-9269 1-516-512-3133

 Email: info@creative-biomart.com  Fax: 1-631-938-8127

 45-1 Ramsey Road, Shirley, NY 11967, USA

CPRPCSELFPLIPNDYLLSWLLFIAFLFSGIITYGHVLWKAHQHVASLSGHQDRQVP
 GMARMRLDVRLAKTLGLVLAVLLICWFPVLALMAHSLATTLSDQVKKAFACSMCLCI
 NSMVNPVIYALRSGEIRSSAHHCLAHWKKCVRGLGSEAKEEAPRSSVTETETADGKIT
 PWPDSRDLDLSDC

Purity Glutathione Sepharose 4 Fast Flow

Applications
 Enzyme-linked Immunoabsorbent Assay
 Western Blot (Recombinant protein)
 Antibody Production
 Protein Array

Notes Best use within three months from the date of receipt of this protein.

Storage Store at -80 centigrade. Aliquot to avoid repeated freezing and thawing.

Preparation in vitro wheat germ expression system

GENE INFORMATION

Gene Name CNR2 cannabinoid receptor 2 [Homo sapiens (human)]

Official Symbol CNR2

Synonyms CB2; CX5; CB-2

Gene ID 1269

mRNA Refseq NM_001841.3

Protein Refseq NP_001832.1

 Tel: 1-631-559-9269 1-516-512-3133

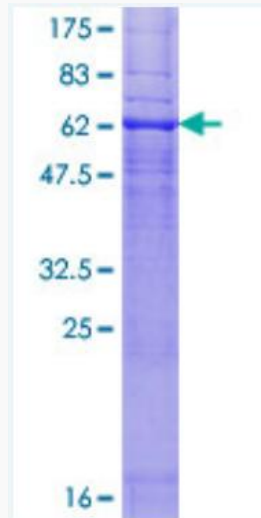
 Email: info@creative-biomart.com  Fax: 1-631-938-8127

 45-1 Ramsey Road, Shirley, NY 11967, USA

MIM 605051

UniProt ID P34972

SDS-PAGE



12.5% SDS-PAGE Stained with Coomassie Blue.

 Tel: 1-631-559-9269 1-516-512-3133

 Email: info@creative-biomart.com  Fax: 1-631-938-8127

 45-1 Ramsey Road, Shirley, NY 11967, USA