

Recombinant Human CNR2 Protein, N-GST-tagged

Cat. No. CNR2-15H **Lot. No.** (See product label)

SPECIFICATION

Product Overview	Human CNR2 partial ORF (NP_001832.1, 302 a.a. - 360 a.a.) recombinant protein with GST tag at N-terminal.
Species	Human
Source	Wheat Germ
Protein Length	302 a.a. - 360 a.a.
Description	The cannabinoid delta-9-tetrahydrocannabinol is the principal psychoactive ingredient of marijuana. The proteins encoded by this gene and the cannabinoid receptor 1 (brain) (CNR1) gene have the characteristics of a guanine nucleotide-binding protein (G-protein)-coupled receptor for cannabinoids. They inhibit adenylate cyclase activity in a dose-dependent, stereoselective, and pertussis toxin-sensitive manner. These proteins have been found to be involved in the cannabinoid-induced CNS effects (including alterations in mood and cognition) experienced by users of marijuana. The cannabinoid receptors are members of family 1 of the G-protein-coupled receptors.
Form	50 mM Tris-HCl, 10 mM reduced Glutathione, pH=8.0 in the elution buffer.
Molecular Mass	31.12 kDa
AA Sequence	RSGEIRSSAHHCLAHWKKCVRGLGSEAKEEAPRSSVTETETADGKITPWPDSRDLDL SDC

 Tel: 1-631-559-9269 1-516-512-3133

 Email: info@creative-biomart.com  Fax: 1-631-938-8127

 45-1 Ramsey Road, Shirley, NY 11967, USA

Purity	Glutathione Sepharose 4 Fast Flow
Applications	Enzyme-linked Immunoabsorbent Assay Western Blot (Recombinant protein) Antibody Production Protein Array
Notes	Best use within three months from the date of receipt of this protein.
Storage	Store at -80 centigrade. Aliquot to avoid repeated freezing and thawing.
Preparation	in vitro wheat germ expression system

GENE INFORMATION

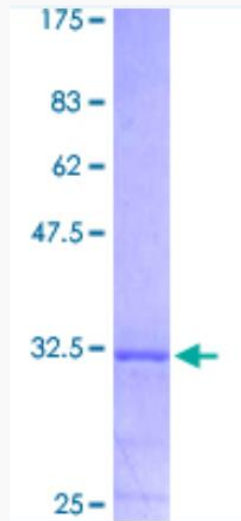
Gene Name	CNR2 cannabinoid receptor 2 [Homo sapiens (human)]
Official Symbol	CNR2
Synonyms	CB2; CX5; CB-2
Gene ID	1269
mRNA Refseq	NM_001841.3
Protein Refseq	NP_001832.1
MIM	605051
UniProt ID	P34972

 Tel: 1-631-559-9269 1-516-512-3133

 Email: info@creative-biomart.com  Fax: 1-631-938-8127

 45-1 Ramsey Road, Shirley, NY 11967, USA

SDS-PAGE



12.5% SDS-PAGE Stained with Coomassie Blue.

 Tel: 1-631-559-9269 1-516-512-3133

 Email: info@creative-biomart.com  Fax: 1-631-938-8127

 45-1 Ramsey Road, Shirley, NY 11967, USA