

Recombinant Human CNR2 Full Length Transmembrane protein, His-tagged

Cat. No. CNR2-29H **Lot. No.** (See product label)

SPECIFICATION

Product Overview

Recombinant Human CNR2 protein(P34972)(1-360aa), fused with N-terminal His tag, was expressed in E. coli.

Species

Human

Source

E.coli

ProteinLength

1-360aa

Form

If the delivery form is liquid, the default storage buffer is Tris/PBS-based buffer, 5%-50% glycerol.
If the delivery form is lyophilized powder, the buffer before lyophilization is Tris/PBS-based buffer, 6% Trehalose, pH 8.0.

Molecular Mass

42.5 kDa

AA Sequence

MEECWVTEIANGSKDGLDSNPMKDYMILSGPQKTAVAVLCTLLGLLSALENVAVLYLI
LSSHQLRRKPSYLFIGSLAGADFLASVVFACSFVNFHVFHGVDSKAVFLLKIGSVTMT
FTASVGSLLLTAIDRYLCLRYPPSYKALLTRGRALVTLGIMWVLSALVSYLPLMGWTC
CPRPCSELFPLIPNDYLLSWLLFIAFLFSGIITYTYGHVWLWKAHQHVASLSGHQDRQVP
GMARMRLDVR LAKTLGLVLAVLLICWFPVLALMAHSLATTLSDQVKKAFACSMCLCI
NSMVNPVIYALRSGEIRSSAHHCLAHWKKCVRGLGSEAKEEAPRSSVTETeadgKIT
PWPDSRDLDLSDC

 Tel: 1-631-559-9269 1-516-512-3133

 Email: info@creative-biomart.com  Fax: 1-631-938-8127

 45-1 Ramsey Road, Shirley, NY 11967, USA

Purity	Greater than 85% as determined by SDS-PAGE.
Storage	Store at -20°C/-80°C upon receipt, aliquoting is necessary for mutiple use. Avoid repeated freeze-thaw cycles.
Reconstitution	Please reconstitute protein in deionized sterile water to a concentration of 0.1-1.0 mg/mL. We recommend to add 5-50% of glycerol (final concentration) and aliquot for long-term storage at -20°C/-80°C. Our default final concentration of glycerol is 50%.

GENE INFORMATION

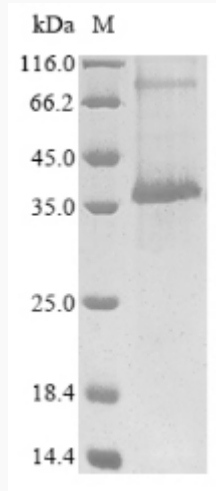
Gene Name	CNR2 cannabinoid receptor 2 (macrophage) [Homo sapiens]
Official Symbol	CNR2
Synonyms	CNR2; cannabinoid receptor 2 (macrophage); cannabinoid receptor 2; CB2; testis-dominant CNR2 isoform CB2; CX5; CB-2;
Gene ID	1269
mRNA Refseq	NM_001841
Protein Refseq	NP_001832
MIM	605051
UniProt ID	P34972

 Tel: 1-631-559-9269 1-516-512-3133

 Email: info@creative-biomart.com  Fax: 1-631-938-8127

 45-1 Ramsey Road, Shirley, NY 11967, USA

SDS-PAGE



 Tel: 1-631-559-9269 1-516-512-3133

 Email: info@creative-biomart.com  Fax: 1-631-938-8127

 45-1 Ramsey Road, Shirley, NY 11967, USA