

Active Recombinant Human CNTF Protein (Met1-Met200), C-His tagged, Animal-free, Carrier-free

Cat. No. CNTF-16H Lot. No. (See product label)

SPECIFICATION

Product Overview	Recombinant Human CNTF Protein (Met1-Met200) with C-His tag was expressed in E. coli and Animal-free as well as Carrier-free.
Species	Human
Source	E.coli
ProteinLength	Met1-Met200
Description	Ciliary neurotrophic factor (CNTF) is the member of IL-6 cytokine family and expressed in the nervous system. CNTF is 22.9 kDa neurotrophic factor containing 200 residues, which shows multiple effects in vertebrate retinogenesis. Besides, CNTF acts as a promoter that not only accelerates adult neurogenesis but also increases the survival of neuron after injury. On the other hands, reducing number of hippocampal GABAergic interneurons, as well as 5-HT levels and 5-HT1A receptor expression has been found in CNTF knockout female mice, indicating that CNTF may influence affective behavior in females by regulation of neurotransmission.
Form	Lyophilized
Bio-activity	Measure by its ability to induce proliferation in TF-1 cells. The ED50 for this effect is < 0.15 µg/mL.
Molecular Mass	The protein has a calculated MW of 23.74 kDa.

 Tel: 1-631-559-9269 1-516-512-3133

 Email: info@creative-biomart.com  Fax: 1-631-938-8127

 45-1 Ramsey Road, Shirley, NY 11967, USA

	The protein migrates as 25 kDa under reducing condition (SDS-PAGE analysis).
Endotoxin	< 0.1 EU/μg of the protein by the LAL method.
Purity	>98% as determined by SDS-PAGE analysis.
Storage	This product is stable after storage at: -20 centigrade for 12 months in lyophilized state from date of receipt. -20 or -80 centigrade for 1 month under sterile conditions after reconstitution. Avoid repeated freeze/thaw cycles.
Storage Buffer	Lyophilized from a 0.2 μm filtered solution of PBS, pH 7.4.
Reconstitution	It is recommended to reconstitute the lyophilized protein in sterile H2O to a concentration not less than 200 μg/mL and incubate the stock solution for at least 20 min to ensure sufficient re-dissolved.
Shipping	The product is shipped with polar packs. Upon receipt, store it immediately at -20 centigrade or lower for long term storage.

GENE INFORMATION

Gene Name	CNTF ciliary neurotrophic factor [Homo sapiens (human)]
Official Symbol	CNTF
Synonyms	CNTF; ciliary neurotrophic factor; HCNTF;
Gene ID	1270
mRNA Refseq	NM_000614

 Tel: 1-631-559-9269 1-516-512-3133

 Email: info@creative-biomart.com  Fax: 1-631-938-8127

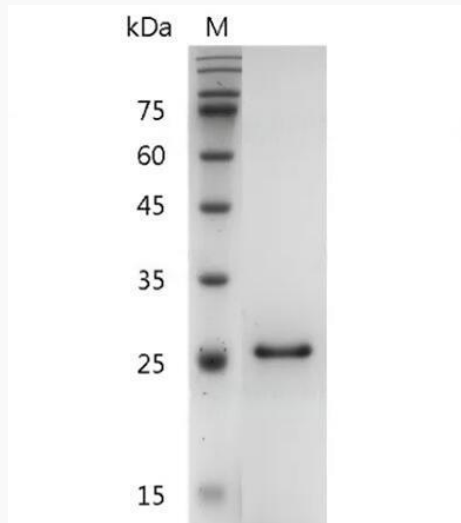
 45-1 Ramsey Road, Shirley, NY 11967, USA

Protein Refseq NP_000605

MIM 118945

UniProt ID P26441

**SDS-PAGE analysis
of recombinant
human CNTF.**



 Tel: 1-631-559-9269 1-516-512-3133

 Email: info@creative-biomart.com  Fax: 1-631-938-8127

 45-1 Ramsey Road, Shirley, NY 11967, USA