

## Recombinant Active Human CNTF Protein, His-tagged(C-ter)

**Cat. No.** CNTF-43H    **Lot. No.** (See product label)

### SPECIFICATION

<b>Product Overview</b>	Recombinant Active Human CNTF Protein with His tag (C-ter) was expressed in E. coli.
<b>Species</b>	Human
<b>Source</b>	E.coli
<b>Description</b>	The protein encoded by this gene is a polypeptide hormone whose actions appear to be restricted to the nervous system where it promotes neurotransmitter synthesis and neurite outgrowth in certain neuronal populations. The protein is a potent survival factor for neurons and oligodendrocytes and may be relevant in reducing tissue destruction during inflammatory attacks. A mutation in this gene, which results in aberrant splicing, leads to ciliary neurotrophic factor deficiency, but this phenotype is not causally related to neurologic disease. A read-through transcript variant composed of the upstream ZFP91 gene and CNTF sequence has been identified, but it is thought to be non-coding. Read-through transcription of ZFP91 and CNTF has also been observed in mouse. [provided by RefSeq, Oct 2010]
<b>Form</b>	Powder
<b>Bio-activity</b>	Determined by its ability to induce proliferation in TF-1 cells. The ED50 for this effect is < 0.15 µg/mL.
<b>AA Sequence</b>	MAFTEHSPLTPHRRDLCSRSIWLARKIRSDLTALTQSIVKHQGLNKNINLDSADGMP VASTDQWSQLTQAQRLQQNLQAYRTFHVLLARLLQDQQVHFTPTQGDFHQAIHTLL

 Tel: 1-631-559-9269    1-516-512-3133

 Email: [info@creative-biomart.com](mailto:info@creative-biomart.com)     Fax: 1-631-938-8127

 45-1 Ramsey Road, Shirley, NY 11967, USA

LQVAAFAYQIQQLMILLQYKIPRNQADGMPINVGDGGLFQKKLWGLKVLQQLSQWT  
 VRSIHDLRFISSHQTGIPARGSHYIANNKKM

**Endotoxin** Endotoxin level is less than 0.01 EU/μg of the protein, as determined by the LAL test.

**Purity** > 98% (by SDS-PAGE)

**Applications** SDS-PAGE

**Notes** For laboratory research only, not for drug, diagnostic or other use.

**Storage** Lyophilized protein should be stored at -20°C. After reconstitution, aliquot and store at -20°C or -80°C for up to one month. Storage in frost free freezers is not recommended. Avoid repeated freeze/thaw cycles. Suggest spin the vial prior to opening.

**Storage Buffer** PBS (pH 7.4)

**Reconstitution** It is recommended to reconstitute the lyophilized protein in sterile water to a concentration not less than 100 μg/mL and incubate the stock solution for at least 20 min at room temperature to make sure the protein is dissolved completely.

## GENE INFORMATION

**Gene Name** CNTF ciliary neurotrophic factor [ Homo sapiens ]

**Official Symbol** CNTF

**Synonyms** CNTF; ciliary neurotrophic factor; HCNTF;

**Gene ID** 1270

 Tel: 1-631-559-9269 1-516-512-3133

 Email: [info@creative-biomart.com](mailto:info@creative-biomart.com)  Fax: 1-631-938-8127

 45-1 Ramsey Road, Shirley, NY 11967, USA

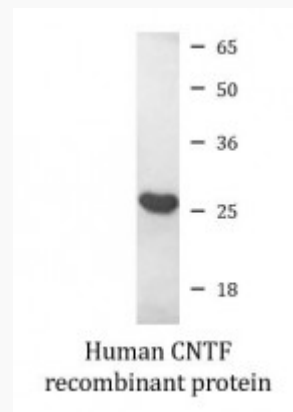
mRNA Refseq [NM\\_000614](#)

Protein Refseq [NP\\_000605](#)

MIM [118945](#)

UniProt ID [P26441](#)

**SDS-PAGE**



 Tel: 1-631-559-9269 1-516-512-3133

 Email: [info@creative-biomart.com](mailto:info@creative-biomart.com)  Fax: 1-631-938-8127

 45-1 Ramsey Road, Shirley, NY 11967, USA