

## Active Recombinant Human CNTFR protein, His-tagged

Cat. No. CNTFR-1253H Lot. No. (See product label)

### SPECIFICATION

<b>Product Overview</b>	Recombinant Human CNTFR-alpha Protein is produced by HEK293 cells expression system. The target protein is expressed with sequence (Gln 23 - Pro 346 ) of human CNTF R alpha (Accession #NP_001833.1) fused with a 6xHis tag at the C-terminus.
<b>Species</b>	Human
<b>Source</b>	HEK293
<b>ProteinLength</b>	Gln 23 - Pro 346
<b>Form</b>	Lyophilized from a 0.22 µm filtered solution of PBS, pH 7.4.
<b>Bio-activity</b>	Measured by its binding ability in a functional ELISA. Immobilized Recombinant Human CNTFR at 3 µg/mL (100 µL/well) can bind Recombinant Human CNTF with a linear range of 0.078-6.3 µg/mL.
<b>Molecular Mass</b>	50-70 kDa
<b>Endotoxin</b>	< 0.1 EU/µg of the protein by LAL method.
<b>Purity</b>	> 95% by SDS-PAGE.
<b>Storage</b>	Store the lyophilized protein at -20°C to -80 °C for long term. After reconstitution, the protein solution is stable at -20 °C for 3 months, at 2-8 °C for up to 1 week.

 Tel: 1-631-559-9269 1-516-512-3133

 Email: [info@creative-biomart.com](mailto:info@creative-biomart.com)  Fax: 1-631-938-8127

 45-1 Ramsey Road, Shirley, NY 11967, USA

**Reconstitution** Reconstitute to a concentration of 0.1-0.5 mg/mL in sterile distilled water.

## GENE INFORMATION

**Gene Name** CNTFR ciliary neurotrophic factor receptor [ Homo sapiens ]

**Official Symbol** CNTFR

**Synonyms** CNTFR; ciliary neurotrophic factor receptor; ciliary neurotrophic factor receptor subunit alpha; CNTFR-alpha; CNTF receptor subunit alpha; MGC1774;

**Gene ID** 1271

**mRNA Refseq** NM\_001207011

**Protein Refseq** NP\_001193940

**MIM** 118946

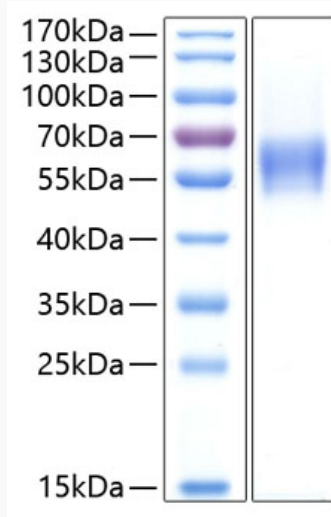
**UniProt ID** P26992

 Tel: 1-631-559-9269 1-516-512-3133

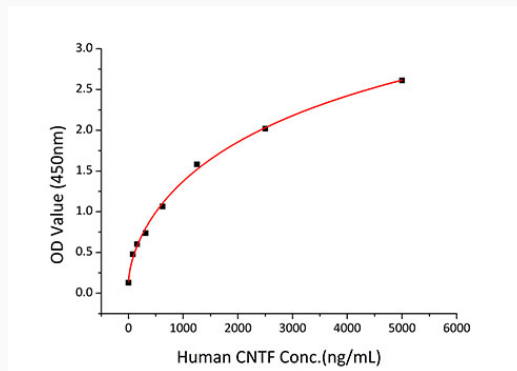
 Email: [info@creative-biomart.com](mailto:info@creative-biomart.com)  Fax: 1-631-938-8127

 45-1 Ramsey Road, Shirley, NY 11967, USA

**SDS-PAGE**



**Activity**



 Tel: 1-631-559-9269 1-516-512-3133

 Email: [info@creative-biomart.com](mailto:info@creative-biomart.com)  Fax: 1-631-938-8127

 45-1 Ramsey Road, Shirley, NY 11967, USA