

Recombinant Human CNTFR Protein, GST-tagged

Cat. No. CNTFR-1607H **Lot. No.** (See product label)

SPECIFICATION

Product Overview	Human CNTFR partial ORF (NP_671693, 47 a.a. - 158 a.a.) recombinant protein with GST-tag at N-terminal.
Species	Human
Source	Wheat Germ
Description	<p>This gene encodes a member of the type 1 cytokine receptor family. The encoded protein is the ligand-specific component of a tripartite receptor for ciliary neurotrophic factor, which plays a critical role in neuronal cell survival, differentiation and gene expression. Binding of ciliary neurotrophic factor to the encoded protein recruits the transmembrane components of the receptor, gp130 and leukemia inhibitory factor receptor, facilitating signal transduction. Single nucleotide polymorphisms in this gene may be associated with variations in muscle strength, as well as early onset of eating disorders. Alternatively spliced transcript variants have been observed for this gene. [provided by RefSeq, May 2011]</p>
Molecular Mass	38.06 kDa
AA Sequence	GTANWDAAVTWRVNGTDLAPDLLNGSQLVVLHGLELGHSGLYACFHRDSWHLRHQ VLLHVGLPPREPVLSCRSNTYPKGFYCSWHLPTPTYIPNTFNVTVLHGSKIMVCEKD P
Applications	Enzyme-linked Immunoabsorbent Assay Western Blot (Recombinant protein)

 Tel: 1-631-559-9269 1-516-512-3133

 Email: info@creative-biomart.com  Fax: 1-631-938-8127

 45-1 Ramsey Road, Shirley, NY 11967, USA

	Antibody Production Protein Array
Notes	Best use within three months from the date of receipt of this protein.
Storage	Store at -80 centigrade. Aliquot to avoid repeated freezing and thawing.
Storage Buffer	50 mM Tris-HCl, 10 mM reduced Glutathione, pH=8.0 in the elution buffer.
GENE INFORMATION	
Gene Name	CNTFR ciliary neurotrophic factor receptor [Homo sapiens]
Official Symbol	CNTFR
Synonyms	CNTFR; ciliary neurotrophic factor receptor; ciliary neurotrophic factor receptor subunit alpha; CNTFR-alpha; CNTF receptor subunit alpha; MGC1774;
Gene ID	1271
mRNA Refseq	NM_001207011
Protein Refseq	NP_001193940
MIM	118946
UniProt ID	P26992

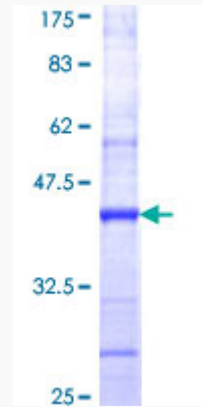
 Tel: 1-631-559-9269 1-516-512-3133

 Email: info@creative-biomart.com  Fax: 1-631-938-8127

 45-1 Ramsey Road, Shirley, NY 11967, USA

Quality Control

Testing:



12.5% SDS-PAGE Stained with Coomassie Blue.

 Tel: 1-631-559-9269 1-516-512-3133

 Email: info@creative-biomart.com  Fax: 1-631-938-8127

 45-1 Ramsey Road, Shirley, NY 11967, USA